

*Education and Cultural Affairs Subcommittee Meeting
with the Department of Education*
Thursday, December 19, 2019

Table of Contents

Contents

Agenda	2
Meeting Minutes.....	4
Study Timeline.....	9
Department of Education - Agency Snapshot	11
Portions of the Agency's Program Evaluation Report	15
Agency Presentation - Division of Educator, Community, and Federal Resources; Division of District Operations and Support.....	57
Committee Contact Information and Upcoming Meetings	130

AGENDA

South Carolina House of Representatives



Legislative Oversight Committee

EDUCATION AND CULTURAL SUBCOMMITTEE

Chairman Joseph H. Jefferson, Jr.

The Honorable Neal A. Collins

The Honorable Patricia Moore "Pat" Henegan

The Honorable Tommy M. Stringer

Thursday, December 19, 2019

10:30 a.m. in Blatt Room 110

Department of Education

Pursuant to Committee Rule 6.8, S.C. ETV shall be allowed access for internet streaming whenever technologically feasible.

AGENDA

- I. Approval of Minutes**
- II. Discussion of the Study of the Department of Education**
- III. Adjournment**

MEETING MINUTES

STUDY TIMELINE

The House Legislative Oversight Committee's (Committee) process for studying the Department of Education (agency) includes actions by the full Committee; Education and Cultural Subcommittee (Subcommittee); the agency; and the public. Key dates and actions are listed below.

Legislative Oversight Committee Actions

- December 5, 2018 - Holds Meeting #1 to schedule the agency for study
- January 1, 2019 - Provides the agency notice about the oversight process
- February 27 - April 1, 2019 - Solicits input about the agency in the form of an online public survey
- July 26, 2019 - Solicits testimony about the agency
- August 13, 2019 - Holds Meeting #2 to obtain public input about the agency

Education and Cultural Subcommittee Actions

- October 9, 2019 - Holds Meeting #3 to discuss the agency's governing body; history; mission; purpose; overview of divisions; employee overview; counterparts (federal and local); compliance (records and policies); successes; challenges; and emerging issues
- November 4, 2019 - Holds Meeting #4 to discuss the agency's Division of College and Career Readiness (Career and Technology; Early Learning and Literacy; Standards and Learning; and Virtual Education and to receive a presentation from the agency's Chief Finance Officer
- November 26, 2019 - Holds Meeting #5 to discuss the agency's Division of Federal Programs, Accountability, and School Improvement (Assessment; Federal and State Accountability; School Transformation; and Special Education Services) and to discuss the remaining office within the agency's Division of College and Career Services (Office of Personalized Learning)
- December 9, 2019 - Holds Meeting #6 to discuss the agency's Division of Legal Affairs (Office of General Council; Grants Program; Office of Governmental Affairs; and Office of Procurement)
- December 18, 2019 - Holds Meeting #7 to discuss the agency's Division of Data, Technology & Agency Operations and the Division of Educator, Community, and Federal Resources.
- Today - December 19, 2019 - Holds Meeting #8 to discuss the agency's Division of District Operations and Support and the Division of Educator, Community, and Federal Resources.

Department of Education

- May 2015 - Submits its Annual Restructuring and Seven-Year Plan Report
- April 2016 - Submits its 2016 Annual Restructuring Report
- September 2016 - Submits its 2015-16 Accountability Report
- September 2017 - Submits its 2016-17 Accountability Report
- September 2018 - Submits its 2017-18 Accountability Report
- August 2019 - Submits its Program Evaluation Report

Public's Actions

- February 27 - April 1, 2019 - Provides input about the agency via an online public survey
- August 13, 2019 - Opportunity to testify during full committee meeting
- Ongoing - Submits written comments on the Committee's webpage on the General Assembly's website(www.scstatehouse.gov)

Figure 1. Key dates in the study process, December 2018 to present.

DEPARTMENT OF EDUCATION - AGENCY SNAPSHOT

Department of Education

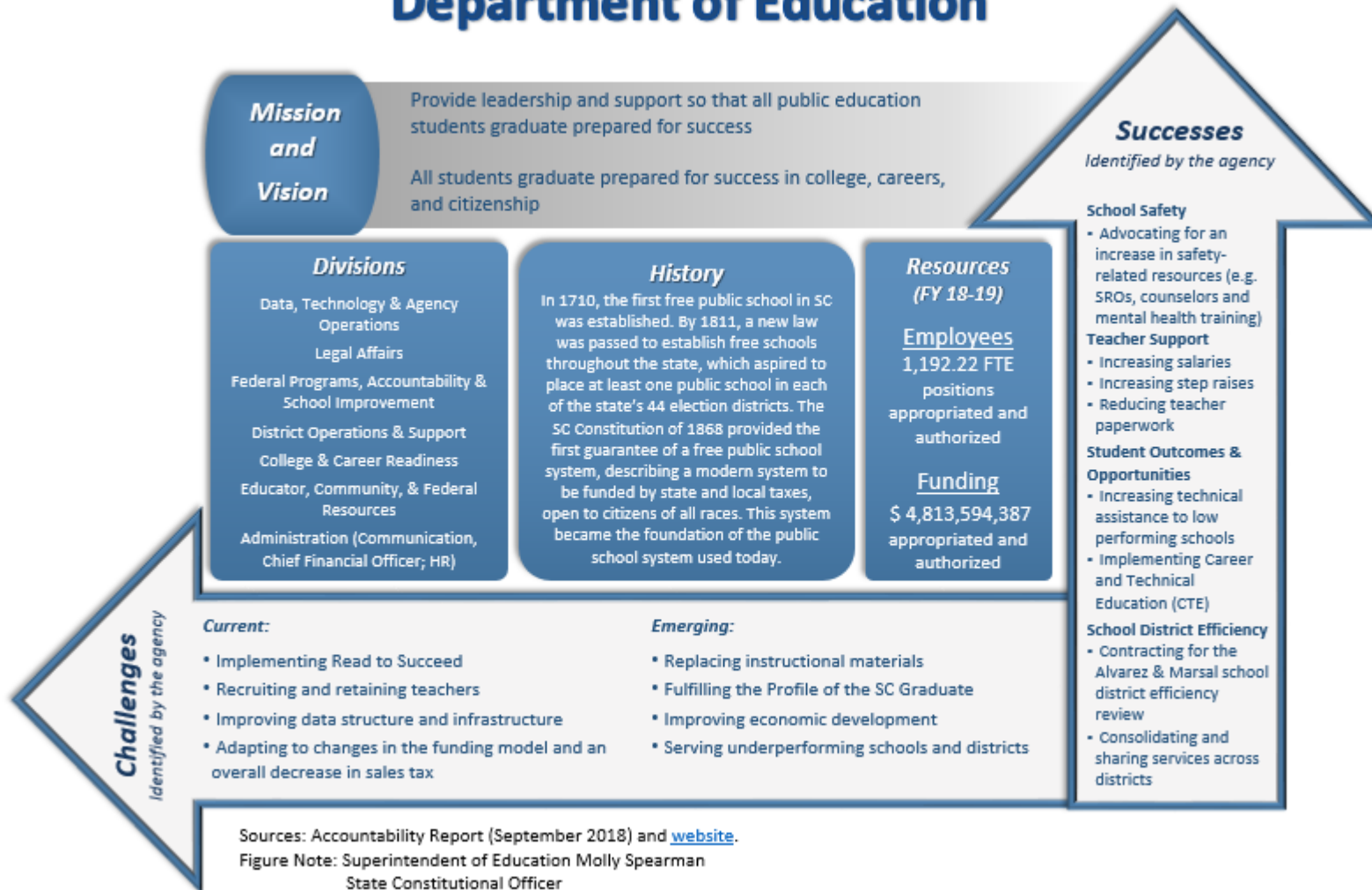


Figure 2. Snapshot of the agency's history, mission, vision, major divisions, fiscal year 2018-19 resources (employees and funding), successes, and current and emerging challenges.¹



SOUTH CAROLINA DEPARTMENT OF EDUCATION Overview



VISION

All students graduate prepared for success in college, careers, and citizenship. By 2022, districts will have available a system of personalized and digital learning that supports students in a safe learning environment to meet the **Profile of the South Carolina Graduate.**

SOUTH CAROLINA GRADUATE *Profile*



World-Class Knowledge

Rigorous standards in language arts and math for career and college readiness

Multiple languages, science, technology, engineering, mathematics (STEM), arts and social sciences

World-Class Skills

Creativity and innovation

Critical thinking and problem solving

Collaboration and teamwork

Communication, information, media and technology

Knowing how to learn

Life + Career Characteristics

Integrity

Self-direction

Global perspective

Perseverance

Work ethic

Interpersonal skills



SOUTH CAROLINA STATE SUPERINTENDENT OF EDUCATION **Molly Mitchell Spearman**

Molly Mitchell Spearman was elected as the 18th South Carolina State Superintendent of Education on November 4, 2014 and re-elected to a second term on November 6, 2018. Native to Saluda County, Mrs. Spearman's childhood laid the foundations of family, faith, and hard work that transcended into her professional career as an educator and civil servant.

Superintendent Spearman's career has spanned 18 years as a public school music teacher and an assistant principal. In addition to teaching and administration, she has served four terms as a member of the South Carolina House of Representatives, six years as Deputy Superintendent of the South Carolina Department of Education, and ten years as the Executive Director of the South Carolina Association of School Administrators. She holds a B.A. Degree in music education from Lander University, a Master's Degree in education supervision from George Washington University, and an Education Specialist degree from the University of South Carolina.

As the South Carolina Superintendent of Education, Mrs. Spearman has the experience and relationships needed to move South Carolina's education system forward. Superintendent Spearman strongly believes the foundation for student success lies in effective classroom teachers and principals who facilitate personalized learning for every student, every day. Her vision is for every South Carolina graduate to be prepared for the next step after graduation.

Superintendent Spearman is excited to keep a positive and forward thinking approach to South Carolina education to promote better schools and brighter futures.

MISSION STATEMENT

The mission of the South Carolina Department of Education is to provide leadership and support so that all public education students graduate prepared for success.



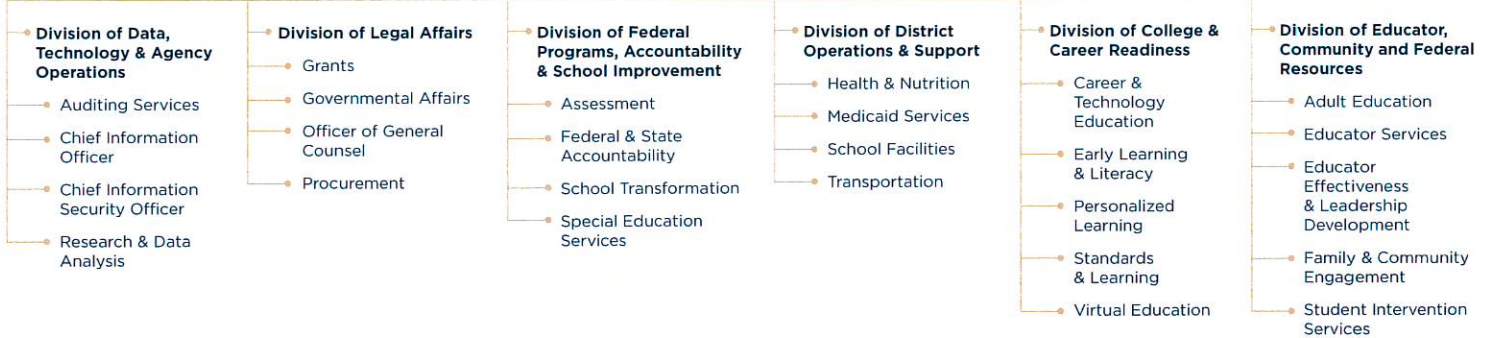


SOUTH CAROLINA DEPARTMENT OF EDUCATION

Organizational Chart

State Superintendent
Molly Spearman

Communications Chief Financial Officer Human Resources



TOTAL EMPLOYEES

Total FTEs: 854

As of end of Fiscal Year 17-18



Division of Legal Affairs 20

Division of Educator, Community, and Federal Resources 72

Division of College and Career Readiness 122

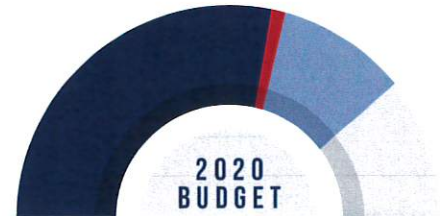
Division of Data, Technology, and Agency Operations 66

Division of District Operations and Support 449

Division of Federal Programs, Accountability, and School Improvement 78

Chief Finance Office 33

Office of Superintendent 14



General Fund \$3,251,710,492

Earmarked \$38,575,638

Restricted \$831,898,773

Federal \$874,838,744

STATE BOARD OF EDUCATION

The State Board of Education is the governing body responsible for public elementary and secondary education in the state.

The board is composed of 17 members: 16 are appointed from each of the state's judicial circuits by their respective legislative delegations and one is appointed directly by the governor. Members serve four-year terms.

Meetings are held the second Tuesday of every month with no meeting held in July.



SOUTH CAROLINA
Bus Shops

TOTAL NUMBERS

Based off the 2018-2019 Report Cards

Students: 778,047

Teachers: 52,733

Schools: 1,272

Districts: 79 Traditional School Districts,
2 Charter Districts

SOUTH CAROLINA DEPARTMENT OF EDUCATION

Rutledge Building

1429 Senate Street
Columbia, SC 29201

803-734-8500
info@ed.sc.gov

Office of Special Education Services

1919 Blanding Street
Columbia, SC 29201

803-734-8224
info@ed.sc.gov

Office of Educator Services

8301 Parklane Road
Columbia, SC 29223

803-896-9325
certification@ed.sc.gov

PORTIONS OF THE AGENCY'S PROGRAM EVALUATION REPORT

Agency Organizational Units - All are included
but the following divisions are presenting:

Division of Educator, Community, and Federal
Resources; and the Division of District
Operations and Support

Agency Deliverables 37, 45-48, 106-123

Associated Performance Measures

AGENCY ORGANIZATIONAL UNITS

Organizational Unit Details

Agency: South Carolina Department of Education

Accurate as of 8/12/19

Name of organizational unit	Office of the Superintendent	Chief of Staff	Chief Finance Office	Communications
Purpose of organizational unit	To carry out the duties of the State Superintendent of Education established in Article XI, Section 2 of the South Carolina Constitution which includes providing support and advocating on behalf of students, educators, and parents in South Carolina.	During fiscal year 2018-2019, the SCDE did a reorganization and the Chief of Staff Office was dissolved.	The Office of Finance is dedicated to ensuring that we service school districts, vendors and other state entities' financial needs and to support education for the benefit of the citizens of South Carolina.	Respond to and engage students, parents, educators, education stakeholders, news media, and South Carolina Citizens regarding education issues and agency
Exit interviews or surveys performed?				
2017-18	Yes	Yes	Yes	Yes
2016-17	Yes	Yes	Yes	Yes
2015-16	Yes	Yes	Yes	Yes
Employee satisfaction tracked?				
2017-18	No	No	No	No
2016-17	No	No	No	No
2015-16	No	No	No	No
Anonymous employee feedback allowed?				
2017-18	Yes	Yes	Yes	Yes
2016-17	Yes	Yes	Yes	Yes
2015-16	Yes	Yes	Yes	Yes
Number of employees (all types) in the unit				
<u>Start of fiscal year</u>				
2017-18	3	4	33	11
2016-17	3	5	31	5
2015-16	4	3	31	7
<u>End of fiscal year</u>				
2017-18	3	5	35	3
2016-17	3	4	33	11
2015-16	4	5	31	5
<u>Leave the unit during fiscal year</u>				
2017-18	0	0	11	5
2016-17	0	1	10	1
2015-16	0	1	7	5
Turnover rate				
2017-18	0.00%	0.00%	32.35%	71.43%
2016-17	0.00%	22.22%	31.25%	12.50%
2015-16	0.00%	25.00%	22.58%	83.33%
Agency Comments (Optional)				
<div style="border: 1px solid black; padding: 5px;"> Agency Wide Has the agency ever conducted an employee engagement, climate, or similar survey? Training and Development Needs Survey - sent out agency wide to assess training needs of employees. If yes, when was last one and who conducted it? 2015 Does the agency conduct employee engagement, climate, or similar surveys on a regular basis? No If yes, what is the frequency? N/A </div> <div style="border: 1px solid black; padding: 5px; margin-top: 5px;"> Note: While exit interviews and surveys are performed, they are not mandatory for employees to complete. Therefore, although they are offered, many choose not to complete them when leaving. Anonymous feedback is allowed through a comment box housed at the agency. This box is checked on a regular basis and concerns are addressed accordingly. </div>	During fiscal year 2018-2019, the SCDE did a reorganization and the Chief of Staff Office was dissolved. These employees were relocated to various offices.			

Organizational Unit Details

Agency: South Carolina Department of Education

Accurate as of 8/12/19

Name of organizational unit	Human Resources	Grants Program (Division of Legal Affairs)	Governmental Affairs (Division of Legal Affairs)
Purpose of organizational unit	The mission of the Office of Human Resources is to provide leadership in human resources issues. Services of the Office of Human Resources include: Recruitment and Staffing Classification and Compensation/Operations Benefits Employee Relations/Staff	The mission of the Grants Program is to provide specialized technical assistance and resources to help the SCDE and school districts address their grant-related needs as we support the profile of the South Carolina	The Governmental Affairs division acts as the primary liaison between the Department of Education and the legislature.
Exit interviews or surveys performed?			
2017-18	Yes	Yes	Yes
2016-17	Yes	Yes	Yes
2015-16	Yes	Yes	Yes
Employee satisfaction tracked?			
2017-18	No	No	No
2016-17	No	No	No
2015-16	No	No	No
Anonymous employee feedback allowed?			
2017-18	Yes	Yes	Yes
2016-17	Yes	Yes	Yes
2015-16	Yes	Yes	Yes
Number of employees (all types) in the unit			
<u>Start of fiscal year</u>			
2017-18	10	3	0
2016-17	10	3	0
2015-16	10	3	0
<u>End of fiscal year</u>			
2017-18	9	4	3
2016-17	10	3	0
2015-16	10	3	0
<u>Leave the unit during fiscal year</u>			
2017-18	1	1	0
2016-17	3	0	0
2015-16	1	0	0
Turnover rate			
2017-18	10.53%	28.57%	0.00%
2016-17	30.00%	0.00%	Agency did not have
2015-16	10.00%	0.00%	Agency did not have
Agency Comments (Optional)			This office was previously combined with the Office of Communications in FY16 & FY17

Agency Wide

Has the agency ever conducted an employee engagement, climate, or similar survey?

Training and Development Needs Survey - sent out agency wide to assess training needs of employees.

If yes, when was last one and who conducted it?

2015

Does the agency conduct employee engagement, climate, or similar surveys on a regular basis?

No

If yes, what is the frequency?

N/A

Note:
While exit interviews and surveys are performed, they are not mandatory for employees to complete. Therefore, although they are offered, many choose not to complete them when leaving.

Anonymous feedback is allowed through a comment box housed at the agency. This box is checked on a regular basis and concerns are addressed accordingly.

Organizational Unit Details

Agency: South Carolina Department of Education

Accurate as of 8/12/19

Name of organizational unit	Office of General Counsel (Division of Legal Affairs)	Procurement (Division of Legal Affairs)
Purpose of organizational unit	The attorneys in the Office of General Counsel provide legal advice to the State Superintendent of Education, the State Board of Education, and the staff of the State Department of Education.	The mission of the Office of Procurement is to support the educational goals of the State Department of Education by providing an efficient and cost effective acquisition of quality goods, services, and management of internal services.
Exit interviews or surveys performed?		
2017-18	Yes	Yes
2016-17	Yes	Yes
2015-16	Yes	Yes
Employee satisfaction tracked?		
2017-18	No	No
2016-17	No	No
2015-16	No	No
Anonymous employee feedback allowed?		
2017-18	Yes	Yes
2016-17	Yes	Yes
2015-16	Yes	Yes
Number of employees (all types) in the unit		
<u>Start of fiscal year</u>		
2017-18	14	3
2016-17	15	4
2015-16	12	5
<u>End of fiscal year</u>		
2017-18	17	4
2016-17	14	3
2015-16	15	4
<u>Leave the unit during fiscal year</u>		
2017-18	4	1
2016-17	7	1
2015-16	1	1
Turnover rate		
2017-18	25.81%	28.57%
2016-17	48.28%	28.57%
2015-16	7.41%	22.22%
Agency Comments (Optional)		

Agency Wide

Has the agency ever conducted an employee engagement, climate, or similar survey?

Training and Development Needs Survey - sent out agency wide to assess training needs of employees.

If yes, when was last one and who conducted it?

2015

Does the agency conduct employee engagement, climate, or similar surveys on a regular basis?

No

If yes, what is the frequency?

N/A

Note:
While exit interviews and surveys are performed, they are not mandatory for employees to complete. Therefore, although they are offered, many choose not to complete them when leaving.

Anonymous feedback is allowed through a comment box housed at the agency. This box is checked on a regular basis and concerns are addressed accordingly.

Organizational Unit Details

Agency: South Carolina Department of Education

Accurate as of 8/12/19

Name of organizational unit	Adult Education (Division of Educator, Community, and Federal Resources)	Educator Effectiveness and Leadership Development (Division of Educator, Community, and Federal Resources)
Purpose of organizational unit	The mission of adult education in South Carolina is to 1) assist adults in becoming literate and obtaining the knowledge and skills necessary for employment and self-sufficiency, 2) assist adults who are parents to obtain the educational skills necessary for them to become full partners in the educational development of their children, and 3) assist adults in the completion of a secondary-school education.	The Office of Educator Effectiveness and Leadership development is guided by our belief that every student deserves effective teachers and leaders who are committed to all students' readiness for college, career, and citizenship. Our mission is to provide a continuum of personalized, competency-driven resources and professional learning to advance educator effectiveness and leadership capacity.
Exit interviews or surveys performed?		
2017-18	Yes	Yes
2016-17	Yes	Yes
2015-16	Yes	Yes
Employee satisfaction tracked?		
2017-18	No	No
2016-17	No	No
2015-16	No	No
Anonymous employee feedback allowed?		
2017-18	Yes	Yes
2016-17	Yes	Yes
2015-16	Yes	Yes
Number of employees (all types) in the unit		
<u>Start of fiscal year</u>		
2017-18	15	14
2016-17	18	17
2015-16	18	20
<u>End of fiscal year</u>		
2017-18	20	16
2016-17	15	14
2015-16	18	17
<u>Leave the unit during fiscal year</u>		
2017-18	3	3
2016-17	8	7
2015-16	8	5
Turnover rate		
2017-18	17.14%	20.00%
2016-17	48.48%	45.16%
2015-16	44.44%	27.03%
Agency Comments (Optional)		
<div style="border: 1px solid black; padding: 5px;"> Agency Wide Has the agency ever conducted an employee engagement, climate, or similar survey? Training and Development Needs Survey - sent out agency wide to assess training needs of employees. If yes, when was last one and who conducted it? 2015 Does the agency conduct employee engagement, climate, or similar surveys on a regular basis? No If yes, what is the frequency? N/A </div> <div style="border: 1px solid black; padding: 5px; margin-top: 5px;"> Note: While exit interviews and surveys are performed, they are not mandatory for employees to complete. Therefore, although they are offered, many choose not to complete them when leaving. Anonymous feedback is allowed through a comment box housed at the agency. This box is checked on a regular basis and concerns are addressed accordingly. </div>		

Organizational Unit Details

Agency: South Carolina Department of Education

Accurate as of 8/12/19

Name of organizational unit	Educator Services (Division of Educator, Community, and Federal Resources)	Family and Community Engagement (Division of Educator, Community, and Federal Resources)
Purpose of organizational unit	The Office of Educator Services is responsible for the recruitment, preparation, and licensure of educators.	In K–12 education, the focus on “parental involvement” has radically shifted to “parent engagement.” The evolution of parent involvement to parent engagement signifies moving parents from routinely attending school functions as invited participants to a more active role as partners in students’ educational
Exit interviews or surveys performed?		
2017-18	Yes	Yes
2016-17	Yes	Yes
2015-16	Yes	Yes
Employee satisfaction tracked?		
2017-18	No	No
2016-17	No	No
2015-16	No	No
Anonymous employee feedback allowed?		
2017-18	Yes	Yes
2016-17	Yes	Yes
2015-16	Yes	Yes
Number of employees (all types) in the unit		
<u>Start of fiscal year</u>		
2017-18	70	2
2016-17	62	2
2015-16	65	0
<u>End of fiscal year</u>		
2017-18	69	2
2016-17	70	2
2015-16	62	2
<u>Leave the unit during fiscal year</u>		
2017-18	51	0
2016-17	39	0
2015-16	45	0
Turnover rate		
2017-18	73.38%	0.00%
2016-17	59.09%	0.00%
2015-16	70.87%	0.00%
Agency Comments (Optional)		
<div style="border: 1px solid black; padding: 5px;"> Agency Wide Has the agency ever conducted an employee engagement, climate, or similar survey? Training and Development Needs Survey - sent out agency wide to assess training needs of employees. If yes, when was last one and who conducted it? 2015 Does the agency conduct employee engagement, climate, or similar surveys on a regular basis? No If yes, what is the frequency? N/A </div> <div style="border: 1px solid black; padding: 5px; margin-top: 5px;"> Note: While exit interviews and surveys are performed, they are not mandatory for employees to complete. Therefore, although they are offered, many choose not to complete them when leaving. Anonymous feedback is allowed through a comment box housed at the agency. This box is checked on a regular basis and concerns are addressed accordingly. </div>		

Organizational Unit Details

Agency: South Carolina Department of Education

Accurate as of 8/12/19

Name of organizational unit	Student Intervention Services (Division of Educator, Community, and Federal Resources)	Career and Technology Education (Division of College and Career Readiness)
Purpose of organizational unit	Established in July 2011, the Office of Student Intervention Services houses programs designed to assist districts with accountability and student intervention services.	The mission of the Office of Career and Technology Education is to provide leadership and services to districts and schools supporting grade-level, standards-based curricula through the integration of academic and career and technical instruction for students in grades seven through twelve while focusing on the Office's 2020 Vision for Career and Technology Education in South Carolina.
Exit interviews or surveys performed?		
2017-18	Yes	Yes
2016-17	Yes	Yes
2015-16	Yes	Yes
Employee satisfaction tracked?		
2017-18	No	No
2016-17	No	No
2015-16	No	No
Anonymous employee feedback allowed?		
2017-18	Yes	Yes
2016-17	Yes	Yes
2015-16	Yes	Yes
Number of employees (all types) in the unit		
<u>Start of fiscal year</u>		
2017-18	16	19
2016-17	16	22
2015-16	11	20
<u>End of fiscal year</u>		
2017-18	16	16
2016-17	16	19
2015-16	16	22
<u>Leave the unit during fiscal year</u>		
2017-18	1	4
2016-17	2	6
2015-16	4	4
Turnover rate		
2017-18	6.25%	22.86%
2016-17	12.50%	29.27%
2015-16	29.63%	19.05%
Agency Comments (Optional)		
<div style="border: 1px solid black; padding: 5px;"> Agency Wide Has the agency ever conducted an employee engagement, climate, or similar survey? Training and Development Needs Survey - sent out agency wide to assess training needs of employees. If yes, when was last one and who conducted it? 2015 Does the agency conduct employee engagement, climate, or similar surveys on a regular basis? No If yes, what is the frequency? N/A </div> <div style="border: 1px solid black; padding: 5px; margin-top: 5px;"> Note: While exit interviews and surveys are performed, they are not mandatory for employees to complete. Therefore, although they are offered, many choose not to complete them when leaving. Anonymous feedback is allowed through a comment box housed at the agency. This box is checked on a regular basis and concerns are addressed accordingly. </div>		

Organizational Unit Details

Agency: South Carolina Department of Education

Accurate as of 8/12/19

Name of organizational unit	Early Learning and Literacy (Division of College and Career Readiness)
Purpose of organizational unit	The mission of the Office of Early Learning and Literacy offers the foundation that supports high-quality early learning programs and support to all children in their development as lifelong learners and contributing members of the community, and supports families in their essential work as parents and caregivers, and to provide leadership and support that all stakeholders deepen their knowledge and skills to effectively implement Read to Succeed to prepare all students for
Exit interviews or surveys performed?	
2017-18	Yes
2016-17	Yes
2015-16	Yes
Employee satisfaction tracked?	
2017-18	No
2016-17	No
2015-16	No
Anonymous employee feedback allowed?	
2017-18	Yes
2016-17	Yes
2015-16	Yes
Number of employees (all types) in the unit	
<u>Start of fiscal year</u>	
2017-18	31
2016-17	31
2015-16	0
<u>End of fiscal year</u>	
2017-18	37
2016-17	31
2015-16	31
<u>Leave the unit during fiscal year</u>	
2017-18	9
2016-17	9
2015-16	3
Turnover rate	
2017-18	26.47%
2016-17	29.03%
2015-16	19.35%
Agency Comments (Optional)	

Agency Wide

Has the agency ever conducted an employee engagement, climate, or similar survey?

Training and Development Needs Survey - sent out agency wide to assess training needs of employees.

If yes, when was last one and who conducted it?

2015

Does the agency conduct employee engagement, climate, or similar surveys on a regular basis?

No

If yes, what is the frequency?

N/A

Note:
While exit interviews and surveys are performed, they are not mandatory for employees to complete. Therefore, although they are offered, many choose not to complete them when leaving.

Anonymous feedback is allowed through a comment box housed at the agency. This box is checked on a regular basis and concerns are addressed accordingly.

The contents of this chart are considered sworn testimony from the agency director.

Organizational Unit Details

Agency: South Carolina Department of Education

Accurate as of 8/12/19

Name of organizational unit	Personalized Learning (Division of College and Career Readiness)	Standards and Learning (Division of College and Career Readiness)
Purpose of organizational unit	The Office of Personalized Learning focuses on specialized teaching for students in order to support them seeking to attain the World Class Knowledge, World Class Skills, and Life and Career Characteristics identified in the Profile of the South Carolina Graduate. The SCDE has established a system of supports to aid districts as they explore, plan, and implement high quality systems for	The Office of Standards and Learning provides educators with an array of multifaceted professional learning opportunities that integrate theory and best practices, build capacity, and are data and results-driven. Through various technologies, job-embedded learning, and customized services, the Office of Standards and Learning seeks to advance the current practice of professional development to bolster teacher quality and, by extension, student learning in
Exit interviews or surveys performed?		
2017-18	Yes	Yes
2016-17	Yes	Yes
2015-16	Yes	Yes
Employee satisfaction tracked?		
2017-18	No	No
2016-17	No	No
2015-16	No	No
Anonymous employee feedback allowed?		
2017-18	Yes	Yes
2016-17	Yes	Yes
2015-16	Yes	Yes
Number of employees (all types) in the unit		
<u>Start of fiscal year</u>		
2017-18	0	20
2016-17	0	15
2015-16	0	20
<u>End of fiscal year</u>		
2017-18	6	18
2016-17	0	20
2015-16	0	15
<u>Leave the unit during fiscal year</u>		
2017-18	1	9
2016-17	0	4
2015-16	0	10
Turnover rate		
2017-18	33.33%	47.37%
2016-17	Agency did not have employees in this unit	22.86%
2015-16	Agency did not have employees in this unit	57.14%
Agency Comments (Optional)		

Agency Wide

Has the agency ever conducted an employee engagement, climate, or similar survey?

Training and Development Needs Survey - sent out agency wide to assess training needs of employees.

If yes, when was last one and who conducted it?

2015

Does the agency conduct employee engagement, climate, or similar surveys on a regular basis?

No

If yes, what is the frequency?

N/A

Note:
While exit interviews and surveys are performed, they are not mandatory for employees to complete. Therefore, although they are offered, many choose not to complete them when leaving.

Anonymous feedback is allowed through a comment box housed at the agency. This box is checked on a regular basis and concerns are addressed accordingly.

Organizational Unit Details

Agency: South Carolina Department of Education

Accurate as of 8/12/19

Name of organizational unit	Virtual Education (Division of College and Career Readiness)	Auditing Services (Division of Data, Technology, and Agency Operations)
Purpose of organizational unit	The mission of the Office of Virtual Education is to develop and deliver standards-based, student-centered online and technology-based interactive instruction to expand educational opportunities for 21st century skills.	The Office of Auditing Services (OAS) is responsible for conducting audits of not-for-profit organizations and selected school districts throughout the State that receive funds administered by the South Carolina Department of Education. OAS conducts internal audits of the agency's programs, operations, and maintenance bus shops to ensure accuracy of reported information, efficient and effective operations, and compliance with applicable laws
Exit interviews or surveys performed?		
2017-18	Yes	Yes
2016-17	Yes	Yes
2015-16	Yes	Yes
Employee satisfaction tracked?		
2017-18	No	No
2016-17	No	No
2015-16	No	No
Anonymous employee feedback allowed?		
2017-18	Yes	Yes
2016-17	Yes	Yes
2015-16	Yes	Yes
Number of employees (all types) in the unit		
<u>Start of fiscal year</u>		
2017-18	230	6
2016-17	225	6
2015-16	150	8
<u>End of fiscal year</u>		
2017-18	224	8
2016-17	230	6
2015-16	225	6
<u>Leave the unit during fiscal year</u>		
2017-18	202	0
2016-17	172	0
2015-16	119	1
Turnover rate		
2017-18	88.99%	0.00%
2016-17	75.60%	0.00%
2015-16	63.47%	14.29%
Agency Comments (Optional)		

Agency Wide

Has the agency ever conducted an employee engagement, climate, or similar survey?

Training and Development Needs Survey - sent out agency wide to assess training needs of employees.

If yes, when was last one and who conducted it?

2015

Does the agency conduct employee engagement, climate, or similar surveys on a regular basis?

No

If yes, what is the frequency?

N/A

Note:
While exit interviews and surveys are performed, they are not mandatory for employees to complete. Therefore, although they are offered, many choose not to complete them when leaving.

Anonymous feedback is allowed through a comment box housed at the agency. This box is checked on a regular basis and concerns are addressed accordingly.

Organizational Unit Details

Agency: South Carolina Department of Education

Accurate as of 8/12/19

Name of organizational unit	Chief Information Officer (Division of Data, Technology, and Agency Operations)	Chief Information Security Office (Division of Data, Technology, and Agency Operations)
Purpose of organizational unit	The mission of the Office of the Chief Information Officer is to provide direction, planning, analysis, design, development and implementation of the agency's information technology services both internally to the agency and coordinating statewide with school and district technology professionals.	The mission of the Chief Information Security Office is to safeguard the confidentiality, integrity, and availability of information systems, data, and applications by providing proactive security expertise, creating and maintaining robust security architecture, and fostering a culture of security awareness throughout the Agency.
Exit interviews or surveys performed?		
2017-18	Yes	Yes
2016-17	Yes	Yes
2015-16	Yes	Yes
Employee satisfaction tracked?		
2017-18	No	No
2016-17	No	No
2015-16	No	No
Anonymous employee feedback allowed?		
2017-18	Yes	Yes
2016-17	Yes	Yes
2015-16	Yes	Yes
Number of employees (all types) in the unit		
<u>Start of fiscal year</u>		
2017-18	33	4
2016-17	36	3
2015-16	30	3
<u>End of fiscal year</u>		
2017-18	43	4
2016-17	33	4
2015-16	36	3
<u>Leave the unit during fiscal year</u>		
2017-18	9	0
2016-17	6	0
2015-16	6	0
Turnover rate		
2017-18	23.68%	0.00%
2016-17	17.39%	0.00%
2015-16	18.18%	0.00%
Agency Comments (Optional)		
<div style="border: 1px solid black; padding: 5px;"> Agency Wide Has the agency ever conducted an employee engagement, climate, or similar survey? Training and Development Needs Survey - sent out agency wide to assess training needs of employees. If yes, when was last one and who conducted it? 2015 Does the agency conduct employee engagement, climate, or similar surveys on a regular basis? No If yes, what is the frequency? N/A </div> <div style="border: 1px solid black; padding: 5px; margin-top: 5px;"> Note: While exit interviews and surveys are performed, they are not mandatory for employees to complete. Therefore, although they are offered, many choose not to complete them when leaving. Anonymous feedback is allowed through a comment box housed at the agency. This box is checked on a regular basis and concerns are addressed accordingly. </div>		

The contents of this chart are considered sworn testimony from the agency director.

Organizational Unit Details

Agency: South Carolina Department of Education

Accurate as of 8/12/19

Name of organizational unit		Research and Data Analysis (Division of Data, Technology, and Agency Operations)	Health and Nutrition (Division of District Operations and Support)	Medicaid Services (Division of District Operations and Support)
Purpose of organizational unit		The mission of the Data Management and Analysis is to provide accurate, reliable, and timely data services for the South Carolina Department of Education and its constituent communities to enable well-informed decisions related to policy and practice.	The Mission of Nutrition Programs is to support districts and schools in the adoption, implementation, and compliance with effective policies, practices, and programs that support student health and nutrition for optimum academic achievement and wellbeing.	The mission of Medicaid Services is to improve the quality and scope of medical services provided in schools through Medicaid reimbursement claiming, Medicaid School District Administrative Claiming (SDAC), and Special Needs Transportation Medicaid Claiming (SNT).
Exit interviews or surveys performed?				
	2017-18	Yes	Yes	Yes
	2016-17	Yes	Yes	Yes
	2015-16	Yes	Yes	Yes
Employee satisfaction tracked?				
	2017-18	No	No	No
	2016-17	No	No	No
	2015-16	No	No	No
Anonymous employee feedback allowed?				
	2017-18	Yes	Yes	Yes
	2016-17	Yes	Yes	Yes
	2015-16	Yes	Yes	Yes
Number of employees (all types) in the unit				
Start of fiscal year				
	2017-18	34	37	8
	2016-17	25	32	7
	2015-16	24	30	8
End of fiscal year				
	2017-18	30	38	8
	2016-17	34	37	8
	2015-16	25	32	7
Leave the unit during fiscal year				
	2017-18	7	6	3
	2016-17	3	13	3
	2015-16	5	14	1
Turnover rate				
	2017-18	21.88%	16.00%	37.50%
	2016-17	10.17%	37.68%	40.00%
	2015-16	20.41%	45.16%	13.33%
Agency Comments (Optional)				
Agency Wide Has the agency ever conducted an employee engagement, climate, or similar survey? Training and Development Needs Survey - sent out agency wide to assess training needs of employees. If yes, when was last one and who conducted it? 2015 Does the agency conduct employee engagement, climate, or similar surveys on a regular basis? No If yes, what is the frequency? N/A				
Note: While exit interviews and surveys are performed, they are not mandatory for employees to complete. Therefore, although they are offered, many choose not to complete them when leaving. Anonymous feedback is allowed through a comment box housed at the agency. This box is checked on a regular basis and concerns are addressed accordingly.				

Organizational Unit Details

Agency: South Carolina Department of Education

Accurate as of 8/12/19

Name of organizational unit	School Facilities (Division of District Operations and Support)
Purpose of organizational unit	The mission of the Office of School Facilities (OSF) is to effectively and efficiently ensure a healthy, safe, and appropriate school learning environment for every student when new schools are constructed or existing schools are renovated. OSF serves as the building official for public schools facilities in South Carolina. The office is also responsible for the administration of certain building fund programs and provides facility-related technical and educational assistance to a broad group of customers, including school architects, engineers, contractors, and
Exit interviews or surveys performed?	
2017-18	Yes
2016-17	Yes
2015-16	Yes
Employee satisfaction tracked?	
2017-18	No
2016-17	No
2015-16	No
Anonymous employee feedback allowed?	
2017-18	Yes
2016-17	Yes
2015-16	Yes
Number of employees (all types) in the unit	
<u>Start of fiscal year</u>	
2017-18	7
2016-17	6
2015-16	6
<u>End of fiscal year</u>	
2017-18	7
2016-17	7
2015-16	6
<u>Leave the unit during fiscal year</u>	
2017-18	4
2016-17	0
2015-16	0
Turnover rate	
2017-18	57.14%
2016-17	0.00%
2015-16	0.00%
Agency Comments (Optional)	

Agency Wide

Has the agency ever conducted an employee engagement, climate, or similar survey?

Training and Development Needs Survey - sent out agency wide to assess training needs of employees.

If yes, when was last one and who conducted it?

2015

Does the agency conduct employee engagement, climate, or similar surveys on a regular basis?

No

If yes, what is the frequency?

N/A

Note:
While exit interviews and surveys are performed, they are not mandatory for employees to complete. Therefore, although they are offered, many choose not to complete them when leaving.

Anonymous feedback is allowed through a comment box housed at the agency. This box is checked on a regular basis and concerns are addressed accordingly.

Organizational Unit Details

Agency: South Carolina Department of Education

Accurate as of 8/12/19

Name of organizational unit	Transportation (Division of District Operations and Support)	Assessment (Division of Federal Programs, Accountability, and School Improvement)
Purpose of organizational unit	The Office of Transportation is responsible for the entire state fleet of public school buses. Some of the Office's key areas of competency include: providing, maintaining, and servicing the state school bus fleet; managing the school bus driver training and certification program; monitoring school transportation safety and providing programs to enhance student transportation safety; assisting districts with school bus routing and scheduling; and aiding districts to respond to federal school	The mission of the Office of Assessment is to select or develop and administer high quality assessments of educational attainment that provide reliable information that can be used as the basis for drawing valid conclusions about examinees and that meet the highest standards of the educational measurement
Exit interviews or surveys performed?		
2017-18	Yes	Yes
2016-17	Yes	Yes
2015-16	Yes	Yes
Employee satisfaction tracked?		
2017-18	No	No
2016-17	No	No
2015-16	No	No
Anonymous employee feedback allowed?		
2017-18	Yes	Yes
2016-17	Yes	Yes
2015-16	Yes	Yes
Number of employees (all types) in the unit		
<u>Start of fiscal year</u>		
2017-18	436	33
2016-17	433	28
2015-16	433	22
<u>End of fiscal year</u>		
2017-18	449	22
2016-17	436	33
2015-16	433	28
<u>Leave the unit during fiscal year</u>		
2017-18	123	15
2016-17	84	11
2015-16	65	5
Turnover rate		
2017-18	27.80%	54.55%
2016-17	19.33%	36.07%
2015-16	15.01%	20.00%
Agency Comments (Optional)		
<div style="border: 1px solid black; padding: 5px;"> Agency Wide Has the agency ever conducted an employee engagement, climate, or similar survey? Training and Development Needs Survey - sent out agency wide to assess training needs of employees. If yes, when was last one and who conducted it? 2015 Does the agency conduct employee engagement, climate, or similar surveys on a regular basis? No If yes, what is the frequency? N/A </div> <div style="border: 1px solid black; padding: 5px; margin-top: 5px;"> Note: While exit interviews and surveys are performed, they are not mandatory for employees to complete. Therefore, although they are offered, many choose not to complete them when leaving. Anonymous feedback is allowed through a comment box housed at the agency. This box is checked on a regular basis and concerns are addressed accordingly. </div>		

The contents of this chart are considered sworn testimony from the agency director.

Organizational Unit Details

Agency: South Carolina Department of Education

Accurate as of 8/12/19

Name of organizational unit	Federal and State Accountability (Division of Federal Programs, Accountability, and School Improvement)	School Transformation (Division of Federal Programs, Accountability, and School Improvement)
Purpose of organizational unit	Federal and State Accountability focuses on improving learning outcomes for all students by providing leadership and support while ensuring that federal and state requirements for accountability are met through effective, comprehensive compliance monitoring and technical assistance.	In the Office of School Transformation, we work cohesively as a team across programs with South Carolina schools to ensure all students perform at high levels, the learning environment is innovative, stakeholders collaborate, and opportunity is the norm.
Exit interviews or surveys performed?		
2017-18	Yes	Yes
2016-17	Yes	Yes
2015-16	Yes	Yes
Employee satisfaction tracked?		
2017-18	No	No
2016-17	No	No
2015-16	No	No
Anonymous employee feedback allowed?		
2017-18	Yes	Yes
2016-17	Yes	Yes
2015-16	Yes	Yes
Number of employees (all types) in the unit		
<u>Start of fiscal year</u>		
2017-18	31	43
2016-17	27	14
2015-16	25	25
<u>End of fiscal year</u>		
2017-18	27	38
2016-17	31	43
2015-16	27	14
<u>Leave the unit during fiscal year</u>		
2017-18	16	9
2016-17	8	9
2015-16	8	10
Turnover rate		
2017-18	55.17%	22.22%
2016-17	27.59%	31.58%
2015-16	30.77%	51.28%
Agency Comments (Optional)		
<div style="border: 1px solid black; padding: 5px;"> Agency Wide Has the agency ever conducted an employee engagement, climate, or similar survey? Training and Development Needs Survey - sent out agency wide to assess training needs of employees. If yes, when was last one and who conducted it? 2015 Does the agency conduct employee engagement, climate, or similar surveys on a regular basis? No If yes, what is the frequency? N/A </div> <div style="border: 1px solid black; padding: 5px; margin-top: 5px;"> Note: While exit interviews and surveys are performed, they are not mandatory for employees to complete. Therefore, although they are offered, many choose not to complete them when leaving. Anonymous feedback is allowed through a comment box housed at the agency. This box is checked on a regular basis and concerns are addressed accordingly. </div>		

Organizational Unit Details

Agency: South Carolina Department of Education

Accurate as of 8/12/19

Name of organizational unit	Special Education Services (Division of Federal Programs, Accountability, and School Improvement)
Purpose of organizational unit	The Office of Special Education Services ensures that all children with disabilities in the state have available a free appropriate public education (FAPE), protects the rights of these children and their parents, and provides leadership to school districts and state-operated programs in the provision of appropriate special educational services.
Exit interviews or surveys performed?	
2017-18	Yes
2016-17	Yes
2015-16	Yes
Employee satisfaction tracked?	
2017-18	No
2016-17	No
2015-16	No
Anonymous employee feedback allowed?	
2017-18	Yes
2016-17	Yes
2015-16	Yes
Number of employees (all types) in the unit	
<u>Start of fiscal year</u>	
2017-18	59
2016-17	37
2015-16	37
<u>End of fiscal year</u>	
2017-18	47
2016-17	59
2015-16	37
<u>Leave the unit during fiscal year</u>	
2017-18	20
2016-17	9
2015-16	27
Turnover rate	
2017-18	37.74%
2016-17	18.75%
2015-16	72.97%
Agency Comments (Optional)	

Agency Wide

Has the agency ever conducted an employee engagement, climate, or similar survey?

Training and Development Needs Survey - sent out agency wide to assess training needs of employees.

If yes, when was last one and who conducted it?

2015

Does the agency conduct employee engagement, climate, or similar surveys on a regular basis?

No

If yes, what is the frequency?

N/A

Note:
While exit interviews and surveys are performed, they are not mandatory for employees to complete. Therefore, although they are offered, many choose not to complete them when leaving.

Anonymous feedback is allowed through a comment box housed at the agency. This box is checked on a regular basis and concerns are addressed accordingly.

AGENCY DELIVERABLES

Deliverables

Agency: South Carolina Department of Education
Accurate as of: 8/12/19

Deliverable	
Item number	37
Associated laws	59-39-115; 59-28-150; 59-1-454; 59-28-130; 59-44-10; 59-44-60; 59-63-32; 59-65-10; 59-65-47; 59-139-90; 1A.67; 59-46-50
Does state or federal law specifically require this deliverable?	Yes
Deliverable description	Provide district support and regional trainings on family engagement strategies; facilitate partnerships between schools, districts, and community agencies in efforts of creating high quality community partnerships across the state; and, provide support to military families covered under the Military Interstate Compact Commission bylaws.
Responsible organizational unit (primary)	Family and Community Engagement (Division of ECFR)
Results Sought	
Does the legislature state intent, findings, or purpose?	Yes
What is specific outcome sought in law OR, if not in law, specific outcome agency seeks by providing the deliverable?	It is the purpose of this compact to remove barriers to educational success imposed on children of military families because of frequent moves and deployment of their parents. (Section 59-46-50).
Associated performance measure item numbers, if any	Unknown
Customer Details	
Customer description	School Districts; Schools; Community Agencies; Families of South Carolina
Does the agency evaluate customer satisfaction?	2017-18 No
Counties served in last completed fiscal year	2017-18 All
Number of customers served in last completed FY	2017-18 Unknown
Percentage change in customers served predicted for current FY	2018-19 Unknown
Maximum number of potential customers, with unlimited resources	All families in South Carolina
Units Provided and Amounts Charged to Customers	
Description of a single deliverable unit	A regional training, district visit, or partnership meeting
Number of units provided	2017-18 13
	2016-17 92
	2015-16 0
Does law prohibit charging the customer for the deliverable?	2017-18 No
If yes, provide law	No applicable law
	2016-17 No
If yes, provide law	No applicable law
	2015-16 No
If yes, provide law	No applicable law
Amount charged to customer per deliverable unit	2017-18 \$0.00
	2016-17 \$0.00
	2015-16 \$0.00
Costs	
Total employee equivalents required (37.5 hour per week units)	2017-18 2.00
	2016-17 2.00
	2015-16 2.00
Total deliverable expenditures each year (operational and employee salary/fringe)	2017-18 \$161,268.46
	2016-17 \$149,092.45
	2015-16 \$40,703.64
Total deliverable expenditures as a percentage of total agency expenditures	2017-18 0.00%
	2016-17 0.00%
	2015-16 0.00%
Agency expenditures per unit of the deliverable	2017-18 \$12,405.27
	2016-17 \$1,620.57
	2015-16 There were no units provided, no cost, or the agency does not track the number of units provided and/or total cost.
Amount generated from providing deliverable	
Total collected from charging customers	2017-18 \$0.00
	2016-17 \$0.00
	2015-16 \$0.00
Total collected from non-state sources as a result of providing the deliverable (federal and other grants awarded to agency to provide deliverable)	2017-18 \$0.00
	2016-17 \$0.00
	2015-16 \$0.00
Total collected from charging customers and non-state sources	2017-18 \$0.00
	2016-17 \$0.00
	2015-16 \$0.00
Agency Comments	
Additional comments from agency (optional)	<p>(FY 17-18): 9 regional trainings, 4 district visits</p> <p>(FY 16-17): 9 district visits, 63 partnership meetings</p> <p>(FY 15-16): The Office of Family and Community Engagement (FACE) was started in January 2016; program coordinator position was filled in May 2016. Community partnership meetings, and district visits were conducted to determine baseline needs and concerns throughout the state. Regional trainings are a direct result of needs expressed to involve parents and community members more in students' education.</p>

Deliverables

Agency: South Carolina Department of Education
Accurate as of: 8/12/19

Deliverable			
	Item number		45
	Associated laws		43-237.1; 59-16-50; 59-33-330; 59-33-340
Does state or federal law specifically require this deliverable?			Yes
Deliverable description			Provide the following services: verification of secondary school completion; copies and replacements or high school equivalency diplomas; copies and replacements or high school equivalency diploma transcripts.
Responsible organizational unit (primary)			Adult Education (Division of ECFR)
Results Sought			
Does the legislature state intent, findings, or purpose?			
What is specific outcome sought in law OR, if not in law, specific outcome agency seeks by providing the deliverable?			The State Board of Education is also responsible for the administration, coordination, and management of adult basic and adult secondary (GED, alternate testing, and high school diploma) education for the purpose of facilitating and coordinating adult basic and adult secondary (GED, alternate testing, and high school diploma) education programs for South Carolina adults whose level of educational attainment is below high school, as prescribed by state and federal laws and regulations. (Section 59-43-20 (B)).
Associated performance measure item numbers, if any			Unknown
Customer Details			
Customer description			Individuals who have earned a high school equivalency diploma
Does the agency evaluate customer satisfaction?		2017-18	No
Counties served in last completed fiscal year		2017-18	All
Number of customers served in last completed FY		2017-18	Unknown
Percentage change in customers served predicted for current FY		2018-19	Unknown
Maximum number of potential customers, with unlimited resources			Unknown
Units Provided and Amounts Charged to Customers			
Description of a single deliverable unit			A replacement copy of a diploma or transcript was issued or verification provided.
Number of units provided		2017-18	Does not track
		2016-17	Does not track
		2015-16	Does not track
Does law prohibit charging the customer for the deliverable?		2017-18	No
If yes, provide law			No applicable law
		2016-17	No
If yes, provide law			No applicable law
		2015-16	No
If yes, provide law			No applicable law
Amount charged to customer per deliverable unit		2017-18	\$10.00
		2016-17	\$10.00
		2015-16	\$10.00
Costs			
Total employee equivalents required (37.5 hour per week units)		2017-18	6.50
		2016-17	6.50
		2015-16	7.00
Total deliverable expenditures each year (operational and employee salary/fringe)		2017-18	\$401,173.75
		2016-17	\$445,678.31
		2015-16	\$495,573.41
Total deliverable expenditures as a percentage of total agency expenditures		2017-18	0.01%
		2016-17	0.01%
		2015-16	0.01%
Agency expenditures per unit of the deliverable		2017-18	There were no units provided, no cost, or the agency does not track the number of units provided and/or total cost.
		2016-17	There were no units provided, no cost, or the agency does not track the number of units provided and/or total cost.
		2015-16	There were no units provided, no cost, or the agency does not track the number of units provided and/or total cost.
Amount generated from providing deliverable			
Total collected from charging customers		2017-18	\$202,665.00
		2016-17	\$228,936.00
		2015-16	\$215,527.50
Total collected from non-state sources as a result of providing the deliverable (federal and other grants awarded to agency to provide deliverable)		2017-18	\$0.00
		2016-17	\$32.50
		2015-16	\$3,539.37
Total collected from charging customers and non-state sources		2017-18	\$202,665.00
		2016-17	\$228,968.50
		2015-16	\$219,066.87
Agency Comments			
Additional comments from agency (optional)			

Deliverables

Agency: South Carolina Department of Education
Accurate as of: 8/12/19

Deliverable		
	Item number	46
	Associated laws	43-237.1; 59-16-50; 59-33-330; 59-33-340
Does state or federal law specifically require this deliverable?		Yes
Deliverable description		Monitor and provide technical assistance of the following grants provided to districts: Adult Education; Corrections Education; Generational Family Services; and Integrated English Literacy and Civics Education.
Responsible organizational unit (primary)		Adult Education (Division of ECFR)
Results Sought		
Does the legislature state intent, findings, or purpose?		
What is specific outcome sought in law OR, if not in law, specific outcome agency seeks by providing the deliverable?		The State Board of Education is also responsible for the administration, coordination, and management of adult basic and adult secondary (GED, alternate testing, and high school diploma) education for the purpose of facilitating and coordinating adult basic and adult secondary (GED, alternate testing, and high school diploma) education programs for South Carolina adults whose level of educational attainment is below high school, as prescribed by state and federal laws and regulations. (Section 59-43-20 (B)).
Associated performance measure item numbers, if any		Unknown
Customer Details		
Customer description		School Districts; Adult Education Centers
Does the agency evaluate customer satisfaction?		2017-18 No
Counties served in last completed fiscal year		2017-18 All
Number of customers served in last completed FY		2017-18 Unknown
Percentage change in customers served predicted for current FY		2018-19 Unknown
Maximum number of potential customers, with unlimited resources		Unknown
Units Provided and Amounts Charged to Customers		
Description of a single deliverable unit		Technical assistance provided or monitoring occurred.
Number of units provided		2017-18 Does not track
		2016-17 Does not track
		2015-16 Does not track
Does law prohibit charging the customer for the deliverable?		2017-18 No
If yes, provide law		No applicable law
		2016-17 No
If yes, provide law		No applicable law
		2015-16 No
If yes, provide law		No applicable law
Amount charged to customer per deliverable unit		2017-18 \$0.00
		2016-17 \$0.00
		2015-16 \$0.00
Costs		
Total employee equivalents required (37.5 hour per week units)		2017-18 13.00
		2016-17 8.00
		2015-16 11.00
Total deliverable expenditures each year (operational and employee salary/fringe)		2017-18 \$457,228.89
		2016-17 \$427,887.74
		2015-16 \$371,776.23
Total deliverable expenditures as a percentage of total agency expenditures		2017-18 0.01%
		2016-17 0.01%
		2015-16 0.01%
Agency expenditures per unit of the deliverable		2017-18 There were no units provided, no cost, or the agency does not track the number of units provided and/or total cost.
		2016-17 There were no units provided, no cost, or the agency does not track the number of units provided and/or total cost.
		2015-16 There were no units provided, no cost, or the agency does not track the number of units provided and/or total cost.
Amount generated from providing deliverable		
Total collected from charging customers		2017-18 \$0.00
		2016-17 \$0.00
		2015-16 \$0.00
Total collected from non-state sources as a result of providing the deliverable (federal and other grants awarded to agency to provide deliverable)		2017-18 \$945,170.46
		2016-17 \$1,499,144.60
		2015-16 \$2,341,761.24
Total collected from charging customers and non-state sources		2017-18 \$945,170.46
		2016-17 \$1,499,144.60
		2015-16 \$2,341,761.24
Agency Comments		
Additional comments from agency (optional)		

Deliverables

Agency: South Carolina Department of Education
Accurate as of: 8/12/19

Deliverable		
	Item number	47
	Associated laws	43-237.1; 59-16-50; 59-33-330; 59-33-340
Does state or federal law specifically require this deliverable?		Yes
Deliverable description		Provide trainings and support regarding adult education for each program year to districts.
Responsible organizational unit (primary)		Adult Education (Division of ECFR)
Results Sought		
Does the legislature state intent, findings, or purpose?		
What is specific outcome sought in law OR, if not in law, specific outcome agency seeks by providing the deliverable?		The State Board of Education and the local school districts are responsible for effective coordination and utilization of literacy councils, the technical education system, the educational television network, nonprofit groups, business and industry representatives, and other state and local agencies and private persons interested in adult basic and adult secondary (GED, alternate testing, and high school diploma) education programs to deliver programs to the state's undereducated adult population. (Section 59-43-20 (B)).
Associated performance measure item numbers, if any		5.4.1; 5.4.2
Customer Details		
Customer description		School Districts; Adult Education Centers
Does the agency evaluate customer satisfaction?		2017-18 No
Counties served in last completed fiscal year		2017-18 All
Number of customers served in last completed FY		2017-18 Unknown
Percentage change in customers served predicted for current FY		2018-19 Unknown
Maximum number of potential customers, with unlimited resources		Unknown
Units Provided and Amounts Charged to Customers		
Description of a single deliverable unit		A training or support offered
Number of units provided		2017-18 Unknown
		2016-17 Unknown
		2015-16 Unknown
Does law prohibit charging the customer for the deliverable?		2017-18 No
If yes, provide law		No applicable law
		2016-17 No
If yes, provide law		No applicable law
		2015-16 No
If yes, provide law		No applicable law
Amount charged to customer per deliverable unit		2017-18 \$0.00
		2016-17 \$0.00
		2015-16 \$0.00
Costs		
Total employee equivalents required (37.5 hour per week units)		2017-18 13.50
		2016-17 8.50
		2015-16 11.00
Total deliverable expenditures each year (operational and employee salary/fringe)		2017-18 \$457,228.89
		2016-17 \$427,887.74
		2015-16 \$371,776.23
Total deliverable expenditures as a percentage of total agency expenditures		2017-18 0.01%
		2016-17 0.01%
		2015-16 0.01%
Agency expenditures per unit of the deliverable		2017-18 There were no units provided, no cost, or the agency does not track the number of units provided and/or total cost.
		2016-17 There were no units provided, no cost, or the agency does not track the number of units provided and/or total cost.
		2015-16 There were no units provided, no cost, or the agency does not track the number of units provided and/or total cost.
Amount generated from providing deliverable		
Total collected from charging customers		2017-18 \$0.00
		2016-17 \$0.00
		2015-16 \$0.00
Total collected from non-state sources as a result of providing the deliverable (federal and other grants awarded to agency to provide deliverable)		2017-18 \$0.00
		2016-17 \$0.00
		2015-16 \$0.00
Total collected from charging customers and non-state sources		2017-18 \$0.00
		2016-17 \$0.00
		2015-16 \$0.00
Agency Comments		
Additional comments from agency (optional)		Trainings include, but are not limited to, New Director Training, Beginning of the Year Directors Meeting; Assessment Policy Training, New ESL Teacher Orientation, Family Literacy Training, Test of Adult Basic Education (TABE) Training, Database training, BEST Plus Training, BEST Literacy training, Mid-Year Director Meeting, Summer Academy Training, Fall Conference Training, and Spring Conference Training.

Deliverables

Agency: South Carolina Department of Education
Accurate as of: 8/12/19

Deliverable		
	Item number	48
	Associated laws	43-237.1; 59-16-50; 59-33-330; 59-33-340; 1A.27
Does state or federal law specifically require this deliverable?		Yes
Deliverable description		Provide support and oversight of the Young Adult Program (YAP) Proviso for 17 to 21 year olds in adult education.
Responsible organizational unit (primary)		Adult Education (Division of ECFR)
Results Sought		
Does the legislature state intent, findings, or purpose?		
What is specific outcome sought in law OR, if not in law, specific outcome agency seeks by providing the deliverable?		A minimum of thirty percent of the funds appropriated for Previous adult educationNext must be allocated to school districts to serve Previous adult educationNext students between the ages of seventeen and twenty-one who are enrolled in programs leading to a state high school diploma, state high school equivalency diploma (GED), or career readiness certificate (WorkKeys). (Proviso 1A.27)
Associated performance measure item numbers, if any		Unknown
Customer Details		
Customer description		Individuals age 17 to 21 enrolled in an adult education program
Does the agency evaluate customer satisfaction?		2017-18 No
Counties served in last completed fiscal year		2017-18 All
Number of customers served in last completed FY		2017-18 Unknown
Percentage change in customers served predicted for current FY		2018-19 Unknown
Maximum number of potential customers, with unlimited resources		Unknown
Units Provided and Amounts Charged to Customers		
Description of a single deliverable unit		Support or oversight was provide.
Number of units provided		2017-18 Unknown
		2016-17 Unknown
		2015-16 Unknown
Does law prohibit charging the customer for the deliverable?		2017-18 No
If yes, provide law		No applicable law
		No
If yes, provide law		No applicable law
		No
If yes, provide law		No applicable law
		No
Amount charged to customer per deliverable unit		2017-18 \$0.00
		2016-17 \$0.00
		2015-16 \$0.00
Costs		
Total employee equivalents required (37.5 hour per week units)		2017-18 13.00
		2016-17 8.00
		2015-16 11.00
Total deliverable expenditures each year (operational and employee salary/fringe)		2017-18 \$244,080.26
		2016-17 \$250,001.94
		2015-16 \$201,983.64
Total deliverable expenditures as a percentage of total agency expenditures		2017-18 0.01%
		2016-17 0.01%
		2015-16 0.00%
Agency expenditures per unit of the deliverable		2017-18 There were no units provided, no cost, or the agency does not track the number of units provided and/or total cost.
		2016-17 There were no units provided, no cost, or the agency does not track the number of units provided and/or total cost.
		2015-16 There were no units provided, no cost, or the agency does not track the number of units provided and/or total cost.
Amount generated from providing deliverable		
Total collected from charging customers		2017-18 \$0.00
		2016-17 \$0.00
		2015-16 \$0.00
Total collected from non-state sources as a result of providing the deliverable (federal and other grants awarded to agency to provide deliverable)		2017-18 \$0.00
		2016-17 \$0.00
		2015-16 \$0.00
Total collected from charging customers and non-state sources		2017-18 \$0.00
		2016-17 \$0.00
		2015-16 \$0.00
Agency Comments		
Additional comments from agency (optional)		

Deliverables

Agency: South Carolina Department of Education
Accurate as of: 8/12/19

Deliverable		
	Item number	106
	Associated laws	43-168; 43-169; 59-10-40; 59-10-220; 59-10-320; 59-10-330; 59-21-710; 59-21-750; 59-63-720; 59-63-740; 59-63-765; 59-63-790; 43-168; 43-169; 43-171.1; 7 CFR 210-299; 7 CFR 3016; 7 CFR 3019
Does state or federal law specifically require this deliverable?		Yes
Deliverable description		Provide support and training to school districts regarding Health and Nutrition programs.
Responsible organizational unit (primary)		Health and Nutrition (Division of DOS)
Results Sought		
Does the legislature state intent, findings, or purpose?		Yes
What is specific outcome sought in law OR, if not in law, specific outcome agency seeks by providing the deliverable?		Appropriate professional development must be provided to teachers and volunteers on the importance of physical activity for young children and the relationship of activity and good nutrition to academic performance and healthy lifestyles. (Section 59-10-40).
Associated performance measure item numbers, if any		6.2.1
Customer Details		
Customer description		Schools; School Districts
Does the agency evaluate customer satisfaction?	2017-18	No
Counties served in last completed fiscal year	2017-18	All
Number of customers served in last completed FY	2017-18	Unknown
Percentage change in customers served predicted for current FY	2018-19	Unknown
Maximum number of potential customers, with unlimited resources		Unknown
Units Provided and Amounts Charged to Customers		
Description of a single deliverable unit		Training was offered
Number of units provided	2017-18	Unknown
	2016-17	Unknown
	2015-16	Unknown
Does law prohibit charging the customer for the deliverable?	2017-18	No
If yes, provide law		No applicable law
	2016-17	No
If yes, provide law		No applicable law
	2015-16	No
If yes, provide law		No applicable law
Amount charged to customer per deliverable unit	2017-18	\$0.00
	2016-17	\$0.00
	2015-16	\$0.00
Costs		
Total employee equivalents required (37.5 hour per week units)	2017-18	14.00
	2016-17	13.00
	2015-16	12.00
Total deliverable expenditures each year (operational and employee salary/fringe)	2017-18	\$1,038,752.49
	2016-17	\$804,505.31
	2015-16	\$996,689.45
Total deliverable expenditures as a percentage of total agency expenditures	2017-18	0.02%
	2016-17	0.02%
	2015-16	0.02%
Agency expenditures per unit of the deliverable	2017-18	There were no units provided, no cost, or the agency does not track the number of units provided and/or total cost.
	2016-17	There were no units provided, no cost, or the agency does not track the number of units provided and/or total cost.
	2015-16	There were no units provided, no cost, or the agency does not track the number of units provided and/or total cost.
Amount generated from providing deliverable		
Total collected from charging customers	2017-18	\$0.00
	2016-17	\$0.00
	2015-16	\$0.00
Total collected from non-state sources as a result of providing the deliverable (federal and other grants awarded to agency to provide deliverable)	2017-18	\$0.00
	2016-17	\$0.00
	2015-16	\$0.00
Total collected from charging customers and non-state sources	2017-18	\$0.00
	2016-17	\$0.00
	2015-16	\$0.00
Agency Comments		
Additional comments from agency (optional)		Trainings include, but are not limited to: - Director Training; - New SFA Training; - HACCP; - Produce Safety; - DC System; - ServSafe; - 6 cent Workshop; - Area Meetings Misc. content; - New Managers Training; - SIFT Training 5 days; - Leadership Training; - State Meeting Training Annually; - Misc. training by request as needed

Deliverables

Agency: South Carolina Department of Education
Accurate as of: 8/12/19

Deliverable			107	108
	Item number		43-168; 43-169; 59-10-220; 59-10-320; 59-10-330; 59-21-710; 59-21-750; 59-63-720; 59-63-740; 59-63-765; 59-63-790; 43-168; 43-169; 43-171.1; 7 CFR 210-299; 7 CFR 3016; 7 CFR 3019	43-168; 43-169; 59-10-220; 59-10-320; 59-10-330; 59-21-710; 59-21-750; 59-63-720; 59-63-740; 59-63-765; 59-63-790; 43-168; 43-169; 43-171.1; 7 CFR 210-299; 7 CFR 3016; 7 CFR 3019
	Associated laws			
	Does state or federal law specifically require this deliverable?		Yes	Yes
	Deliverable description		Approve all summer feeding sites and sponsors.	Monitor all School Nutrition programs.
	Responsible organizational unit (primary)		Health and Nutrition (Division of DOS)	Health and Nutrition (Division of DOS)
Results Sought				
	Does the legislature state intent, findings, or purpose?		Yes	Yes
	What is specific outcome sought in law OR, if not in law, specific outcome agency seeks by providing the deliverable?		Federal law—specifically, the National School Lunch Act (42 U.S.C. Section 1758(f), the National School Lunch Program (7 C.F.R. Section 210.10), and the School Breakfast Program (7 C.F.R. Section 220.8)—regulates the nutritional quality of foods served in the nation's school meal programs. For a school meal program to receive USDA subsidies, school meals must meet nutrition standards for saturated fat, vitamins, minerals, protein, calories, and portion sizes. (R. 43-168).	Federal law—specifically, the National School Lunch Act (42 U.S.C. Section 1758(f), the National School Lunch Program (7 C.F.R. Section 210.10), and the School Breakfast Program (7 C.F.R. Section 220.8)—regulates the nutritional quality of foods served in the nation's school meal programs. For a school meal program to receive USDA subsidies, school meals must meet nutrition standards for saturated fat, vitamins, minerals, protein, calories, and portion sizes. (R. 43-168).
	Associated performance measure item numbers, if any		6.2.3	6.2.2
Customer Details				
	Customer description		Summer Feeding Site Sponsors	Schools; School Districts
	Does the agency evaluate customer satisfaction?	2017-18	No	No
	Counties served in last completed fiscal year	2017-18	All	All
	Number of customers served in last completed FY	2017-18	2,010	111
	Percentage change in customers served predicted for current FY	2018-19	Unknown	Unknown
	Maximum number of potential customers, with unlimited resources		3,000	150
Units Provided and Amounts Charged to Customers				
	Description of a single deliverable unit		An approved sponsor site	An annual visit or administrative review.
	Number of units provided	2017-18	2,010	111
		2016-17	1,919	91
		2015-16	1,700	139
	Does law prohibit charging the customer for the deliverable?	2017-18	No	No
	If yes, provide law	2016-17	No applicable law	No applicable law
		2016-17	No	No
	If yes, provide law	2015-16	No applicable law	No applicable law
		2015-16	No	No
	If yes, provide law		No applicable law	No applicable law
	Amount charged to customer per deliverable unit	2017-18	\$0.00	\$0.00
		2016-17	\$0.00	\$0.00
		2015-16	\$0.00	\$0.00
Costs				
	Total employee equivalents required (37.5 hour per week units)	2017-18	5.00	14.00
		2016-17	5.00	13.00
		2015-16	4.00	12.00
	Total deliverable expenditures each year (operational and employee salary/fringe)	2017-18	\$983,530.61	\$1,036,071.14
		2016-17	\$929,194.42	\$1,330,551.23
		2015-16	\$900,035.52	\$994,641.62
	Total deliverable expenditures as a percentage of total agency expenditures	2017-18	0.02%	0.02%
		2016-17	0.02%	0.03%
		2015-16	0.02%	0.02%
	Agency expenditures per unit of the deliverable	2017-18	\$489.32	\$9,333.97
		2016-17	\$484.21	\$14,621.44
		2015-16	\$529.43	\$7,155.70
Amount generated from providing deliverable				
	Total collected from charging customers	2017-18	\$0.00	\$0.00
		2016-17	\$0.00	\$0.00
		2015-16	\$0.00	\$0.00
	Total collected from non-state sources as a result of providing the deliverable (federal and other grants awarded to agency to provide deliverable)	2017-18	\$376,999.37	\$1,680,432.61
		2016-17	\$393,081.44	\$2,099,589.30
		2015-16	\$43,086.91	\$1,515,059.23
	Total collected from charging customers and non-state sources	2017-18	\$376,999.37	\$1,680,432.61
		2016-17	\$393,081.44	\$2,099,589.30
		2015-16	\$43,086.91	\$1,515,059.23
Agency Comments				
	Additional comments from agency (optional)			(FY 17-18): 63 annual visits; 48 administrative reviews = 111 Total (FY 16-17): 47 annual visits; 44 administrative reviews = 91 Total (FY 15-16): 93 annual visits; 46 administrative reviews = 139 Total

Deliverables

Agency: South Carolina Department of Education
Accurate as of: 8/12/19

Deliverable				
	Item number		109	110
	Associated laws		43-168; 43-169; 59-10-220; 59-10-320; 59-10-330; 59-21-710; 59-21-750; 59-63-720; 59-63-740; 59-63-765; 59-63-790; 43-168; 43-169; 43-171.1; 7 CFR 210-299; 7 CFR 3016; 7 CFR 3019	7 CFR 210-299; 7 CFR 3016; 7 CFR 3019
	Does state or federal law specifically require this deliverable?		Yes	Yes
	Deliverable description		Oversee and monitor USDA Foods to School Food Authorities.	Monitor USDA grants for CEP, FFVP and Federal Equipment
	Responsible organizational unit (primary)		Health and Nutrition (Division of DOS)	Health and Nutrition (Division of DOS)
Results Sought				
	Does the legislature state intent, findings, or purpose?		Yes	Yes
	What is specific outcome sought in law OR, if not in law, specific outcome agency seeks by providing the deliverable?		Federal law—specifically, the National School Lunch Act (42 U.S.C. Section 1758(f), the National School Lunch Program (7 C.F.R. Section 210.10), and the School Breakfast Program (7 C.F.R. Section 220.8)—regulates the nutritional quality of foods served in the nation's school meal programs. For a school meal program to receive USDA subsidies, school meals must meet nutrition standards for saturated fat, vitamins, minerals, protein, calories, and portion sizes. (R. 43-168).	Federal law—specifically, the National School Lunch Act (42 U.S.C. Section 1758(f), the National School Lunch Program (7 C.F.R. Section 210.10), and the School Breakfast Program (7 C.F.R. Section 220.8)—regulates the nutritional quality of foods served in the nation's school meal programs. For a school meal program to receive USDA subsidies, school meals must meet nutrition standards for saturated fat, vitamins, minerals, protein, calories, and portion sizes. (R. 43-168).
	Associated performance measure item numbers, if any		Unknown	Unknown
Customer Details				
	Customer description		School Districts; USDA	Schools; School District
	Does the agency evaluate customer satisfaction?	2017-18	No	No
	Counties served in last completed fiscal year	2017-18	All	All
	Number of customers served in last completed FY	2017-18	Unknown	175
	Percentage change in customers served predicted for current FY	2018-19	Unknown	Unknown
	Maximum number of potential customers, with unlimited resources		Unknown	250
Units Provided and Amounts Charged to Customers				
	Description of a single deliverable unit		A pound of food shipped	A grant awarded to a SFA or school.
	Number of units provided	2017-18	5,344,628	175
		2016-17	9,032,574	239
		2015-16	8,293,868	188
	Does law prohibit charging the customer for the deliverable?	2017-18	No	No
	If yes, provide law	2016-17	No applicable law	No applicable law
		2016-17	No	No
	If yes, provide law	2015-16	No applicable law	No applicable law
		2015-16	No	No
	If yes, provide law		No applicable law	No applicable law
	Amount charged to customer per deliverable unit	2017-18	\$0.00	\$0.00
		2016-17	\$0.00	\$0.00
		2015-16	\$0.00	\$0.00
Costs				
	Total employee equivalents required (37.5 hour per week units)	2017-18	3.00	2.00
		2016-17	4.00	2.00
		2015-16	4.00	2.00
	Total deliverable expenditures each year (operational and employee salary/fringe)	2017-18	\$711,394.83	\$618,778.83
		2016-17	\$804,505.31	\$746,345.73
		2015-16	\$859,955.34	\$748,048.63
	Total deliverable expenditures as a percentage of total agency expenditures	2017-18	0.02%	0.01%
		2016-17	0.02%	0.02%
		2015-16	0.02%	0.02%
	Agency expenditures per unit of the deliverable	2017-18	\$0.13	\$3,535.88
		2016-17	\$0.09	\$3,122.79
		2015-16	\$0.10	\$3,978.98
Amount generated from providing deliverable				
	Total collected from charging customers	2017-18	\$0.00	\$0.00
		2016-17	\$0.00	\$0.00
		2015-16	\$0.00	\$0.00
	Total collected from non-state sources as a result of providing the deliverable (federal and other grants awarded to agency to provide deliverable)	2017-18	\$1,153,831.07	\$1,003,614.60
		2016-17	\$1,269,496.96	\$1,177,722.04
		2015-16	\$1,309,902.23	\$1,139,443.55
	Total collected from charging customers and non-state sources	2017-18	\$1,153,831.07	\$1,003,614.60
		2016-17	\$1,269,496.96	\$1,177,722.04
		2015-16	\$1,309,902.23	\$1,139,443.55
Agency Comments				
	Additional comments from agency (optional)		(FY 17-18): FFVP granted to 36 SFAs and 139 schools. (FY 16-17): FFVP granted to 40 SFAs and 199 schools. (FY 15-16): FFVP granted to 40 SFAs and 148 schools. 2016 Equipment Grant – Awarded a total of 16 SFAs, 29 schools 2017 Equipment Grant – Awarded a total of 17 SFAs, 32 schools 2018 Equipment Grant – Awarded a total of 15 SFAs, 27 schools	

Deliverables

Agency: South Carolina Department of Education
Accurate as of: 8/12/19

Deliverable				
	Item number		111	112
	Associated laws			
	Does state or federal law specifically require this deliverable?		No	No
	Deliverable description		Monitor, train, and support school districts regarding compliance with Medicaid billing for school-based services	Administration of School District Administrative Claiming (SDAC) program related to school district Medicaid reimbursement for administrative activities
	Responsible organizational unit (primary)		Medicaid Services (Division of DOS)	Medicaid Services (Division of DOS)
Results Sought				
	Does the legislature state intent, findings, or purpose?		No	No
	What is specific outcome sought in law OR, if not in law, specific outcome agency seeks by providing the deliverable?		Provide support to school districts regarding compliance with Medicaid billing for school based services.	Provide support to school districts regarding compliance with Medicaid billing for school based services.
	Associated performance measure item numbers, if any		6.3.2; 6.3.3	Unknown
Customer Details				
	Customer description		School Districts; SC DHHS	School Districts
	Does the agency evaluate customer satisfaction?	2017-18		No
	Counties served in last completed fiscal year	2017-18	All	All
	Number of customers served in last completed FY	2017-18	All School Districts	330
	Percentage change in customers served predicted for current FY	2018-19	0.00%	Unknown
	Maximum number of potential customers, with unlimited resources		All School Districts	Unknown
Units Provided and Amounts Charged to Customers				
	Description of a single deliverable unit		On-site visit, state agency visit, Annual report to DHHS, or technical assistance training	Invoice processed or technical assistance training provided
	Number of units provided	2017-18	168	330
		2016-17	107	322
		2015-16	96	320
	Does law prohibit charging the customer for the deliverable?	2017-18	No	No
	If yes, provide law		No applicable law	No applicable law
		2016-17	No	No
	If yes, provide law		No applicable law	No applicable law
		2015-16	No	No
	If yes, provide law		No applicable law	No applicable law
	Amount charged to customer per deliverable unit	2017-18	\$0.00	\$0.00
		2016-17	\$0.00	\$0.00
		2015-16	\$0.00	\$0.00
Costs				
	Total employee equivalents required (37.5 hour per week units)	2017-18	4.80	1.10
		2016-17	4.75	1.13
		2015-16	4.30	1.35
	Total deliverable expenditures each year (operational and employee salary/fringe)	2017-18	\$300,650.44	\$68,899.06
		2016-17	\$341,601.89	\$80,905.71
		2015-16	\$357,086.77	\$112,108.64
	Total deliverable expenditures as a percentage of total agency expenditures	2017-18	0.01%	0.00%
		2016-17	0.01%	0.00%
		2015-16	0.01%	0.00%
	Agency expenditures per unit of the deliverable	2017-18	\$1,789.59	\$208.79
		2016-17	\$3,192.54	\$251.26
		2015-16	\$3,719.65	\$350.34
Amount generated from providing deliverable				
	Total collected from charging customers	2017-18	\$0.00	\$0.00
		2016-17	\$0.00	\$0.00
		2015-16	\$0.00	\$0.00
	Total collected from non-state sources as a result of providing the deliverable (federal and other grants awarded to agency to provide deliverable)	2017-18	\$176,158.67	\$40,369.69
		2016-17	\$144,498.77	\$34,223.39
		2015-16	\$260,548.50	\$81,800.12
	Total collected from charging customers and non-state sources	2017-18	\$176,158.67	\$40,369.69
		2016-17	\$144,498.77	\$34,223.39
		2015-16	\$260,548.50	\$81,800.12
Agency Comments				
	Additional comments from agency (optional)		(FY 17-18): 81 on-site district visits, 2 state agency site visit, 1 Annual Report to SC DHHS, and 85 Technical Assistance trainings (FY 16-17): 81 on-site district visits, 1 state agency site visit, 1 Annual Report to SC DHHS, and 24 Technical Assistance trainings (FY 15-16): 81 on-site district visits, 1 state agency site visit, 1 Annual Report to SC DHHS, and 13 Technical Assistance trainings	(FY 17-18): 318 Invoices processed; 12 Technical Assistance trainings (FY 16-17): 316 Invoices processed; 6 Technical Assistance trainings (FY 15-16): 316 Invoices processed; 4 Technical Assistance trainings

Deliverables

Agency: South Carolina Department of Education
Accurate as of: 8/12/19

Deliverable		
	Item number	113
	Associated laws	
Does state or federal law specifically require this deliverable?		No
Deliverable description		Medicaid reimbursement for Special Needs Transportation
Responsible organizational unit (primary)		Medicaid Services (Division of DOS)
Results Sought		
Does the legislature state intent, findings, or purpose?		No
What is specific outcome sought in law OR, if not in law, specific outcome agency seeks by providing the deliverable?		Provide support to school districts regarding compliance with Medicaid billing for school based services.
Associated performance measure item numbers, if any		Unknown
Customer Details		
Customer description		School Districts; SCDE
Does the agency evaluate customer satisfaction?	2017-18	No
Counties served in last completed fiscal year	2017-18	All
Number of customers served in last completed FY	2017-18	80 School Districts
Percentage change in customers served predicted for current FY	2018-19	Unknown
Maximum number of potential customers, with unlimited resources		All School Districts
Units Provided and Amounts Charged to Customers		
Description of a single deliverable unit		District participating in SNT claiming
Number of units provided	2017-18	80
	2016-17	80
	2015-16	79
Does law prohibit charging the customer for the deliverable?	2017-18	No
If yes, provide law		No applicable law
	2016-17	No
If yes, provide law		No applicable law
	2015-16	No
If yes, provide law		No applicable law
Amount charged to customer per deliverable unit	2017-18	\$0.00
	2016-17	\$0.00
	2015-16	\$0.00
Costs		
Total employee equivalents required (37.5 hour per week units)		
	2017-18	2.35
	2016-17	1.13
	2015-16	2.10
Total deliverable expenditures each year (operational and employee salary/fringe)		
	2017-18	\$131,534.57
	2016-17	\$80,905.71
	2015-16	\$195,152.07
Total deliverable expenditures as a percentage of total agency expenditures		
	2017-18	0.00%
	2016-17	0.00%
	2015-16	0.00%
Agency expenditures per unit of the deliverable		
	2017-18	\$1,644.18
	2016-17	\$1,011.32
	2015-16	\$2,470.28
Amount generated from providing deliverable		
Total collected from charging customers		
	2017-18	\$0.00
	2016-17	\$0.00
	2015-16	\$0.00
Total collected from non-state sources as a result of providing the deliverable (federal and other grants awarded to agency to provide deliverable)		
	2017-18	\$348,982.35
	2016-17	\$154,699.80
	2015-16	\$1,751,260.07
Total collected from charging customers and non-state sources		
	2017-18	\$348,982.35
	2016-17	\$154,699.80
	2015-16	\$1,751,260.07
Agency Comments		
Additional comments from agency (optional)		

Deliverables

Agency: South Carolina Department of Education
Accurate as of: 8/12/19

Deliverable	
Item number	114
Associated laws	59-23-220; 59-23-230; 59-23-240; 59-23-250; 59-63-910
Does state or federal law specifically require this deliverable?	Yes
Deliverable description	Conduct Plan Reviews
Responsible organizational unit (primary)	School Facilities (Division of DOS)
Results Sought	
Does the legislature state intent, findings, or purpose?	Yes
What is specific outcome sought in law OR, if not in law, specific outcome agency seeks by providing the deliverable?	All construction, improvement, and renovation of public school buildings and property on or after the effective date of this section must have plans and specifications submitted to the State Superintendent of Education or the superintendent's designee. Approval of the plans and specifications by the State Superintendent of Education or the superintendent's designee must be received before public bidding before the construction can begin. (Section 59-23-210 (B)).
Associated performance measure item numbers, if any	Unknown
Customer Details	
Customer description	School Districts; Design Professionals
Does the agency evaluate customer satisfaction?	2017-18 No
Counties served in last completed fiscal year	2017-18 All
Number of customers served in last completed FY	2017-18 Unknown
Percentage change in customers served predicted for current FY	2018-19 Unknown
Maximum number of potential customers, with unlimited resources	Unknown
Units Provided and Amounts Charged to Customers	
Description of a single deliverable unit	
Number of units provided	2017-18 Unknown
	2016-17 Unknown
	2015-16 Unknown
Does law prohibit charging the customer for the deliverable?	2017-18 No
If yes, provide law	No applicable law
	2016-17 No
If yes, provide law	No applicable law
	2015-16 No
If yes, provide law	No applicable law
Amount charged to customer per deliverable unit	2017-18 \$0.00
	2016-17 \$0.00
	2015-16 \$0.00
Costs	
Total employee equivalents required (37.5 hour per week units)	2017-18 2.75
	2016-17 2.90
	2015-16 2.55
Total deliverable expenditures each year (operational and employee salary/fringe)	2017-18 \$238,675.89
	2016-17 \$1,605,379.41
	2015-16 \$256,808.53
Total deliverable expenditures as a percentage of total agency expenditures	2017-18 0.01%
	2016-17 0.04%
	2015-16 0.01%
Agency expenditures per unit of the deliverable	2017-18 There were no units provided, no cost, or the agency does not track the number of units provided and/or total cost.
	2016-17 There were no units provided, no cost, or the agency does not track the number of units provided and/or total cost.
	2015-16 There were no units provided, no cost, or the agency does not track the number of units provided and/or total cost.
Amount generated from providing deliverable	
Total collected from charging customers	2017-18 \$0.00
	2016-17 \$0.00
	2015-16 \$0.00
Total collected from non-state sources as a result of providing the deliverable (federal and other grants awarded to agency to provide deliverable)	2017-18 \$0.00
	2016-17 \$0.00
	2015-16 \$0.00
Total collected from charging customers and non-state sources	2017-18 \$0.00
	2016-17 \$0.00
	2015-16 \$0.00
Agency Comments	
Additional comments from agency (optional)	Of this expenditure amount for FY 16-17, \$3,289,022.25 was for payments to vendors that conducted efficiency studies and facilities assessments. Only \$586,031.49 of expenditures supported Office of Facilities operations/core functions.

Deliverables

Agency: South Carolina Department of Education
Accurate as of: 8/12/19

Deliverable		
	Item number	115
	Associated laws	59-23-220; 59-23-230; 59-23-240; 59-23-250; 59-63-910
Does state or federal law specifically require this deliverable?		Yes
Deliverable description		Issue Building Permits for all newly constructed buildings and renovation projects
Responsible organizational unit (primary)		School Facilities (Division of DOS)
Results Sought		
Does the legislature state intent, findings, or purpose?		Yes
What is specific outcome sought in law OR, if not in law, specific outcome agency seeks by providing the deliverable?		All construction, improvements, and renovation of public school buildings and property must be inspected by the State Superintendent of Education or the superintendent's designee for compliance with the applicable codes and standards. (Section 59-23-220).
Associated performance measure item numbers, if any		Unknown
Customer Details		
Customer description		School Districts; Design Professionals; Contractors; Other State Agencies
Does the agency evaluate customer satisfaction?		2017-18 No
Counties served in last completed fiscal year		2017-18 All
Number of customers served in last completed FY		2017-18 Unknown
Percentage change in customers served predicted for current FY		2018-19 Unknown
Maximum number of potential customers, with unlimited resources		Unknown
Units Provided and Amounts Charged to Customers		
Description of a single deliverable unit		
Number of units provided		2017-18 70
		2016-17 Unknown
		2015-16 Unknown
Does law prohibit charging the customer for the deliverable?		2017-18 No
If yes, provide law		No applicable law
		2016-17 No
If yes, provide law		No applicable law
		2015-16 No
If yes, provide law		No applicable law
Amount charged to customer per deliverable unit		2017-18 \$0.00
		2016-17 \$0.00
		2015-16 \$0.00
Costs		
Total employee equivalents required (37.5 hour per week units)		2017-18 2.75
		2016-17 0.60
		2015-16 0.60
Total deliverable expenditures each year (operational and employee salary/fringe)		2017-18 \$65,093.42
		2016-17 \$332,147.46
		2015-16 \$60,425.54
Total deliverable expenditures as a percentage of total agency expenditures		2017-18 0.00%
		2016-17 0.01%
		2015-16 0.00%
Agency expenditures per unit of the deliverable		2017-18 \$929.91
		2016-17 There were no units provided, no cost, or the agency does not track the number of units provided and/or total cost.
		2015-16 There were no units provided, no cost, or the agency does not track the number of units provided and/or total cost.
Amount generated from providing deliverable		
Total collected from charging customers		2017-18 \$680.00
		2016-17 \$760.00
		2015-16 \$880.00
Total collected from non-state sources as a result of providing the deliverable (federal and other grants awarded to agency to provide deliverable)		2017-18 \$0.00
		2016-17 \$0.00
		2015-16 \$0.00
Total collected from charging customers and non-state sources		2017-18 \$680.00
		2016-17 \$760.00
		2015-16 \$880.00
Agency Comments		
Additional comments from agency (optional)		

Deliverables

Agency: South Carolina Department of Education
Accurate as of: 8/12/19

Deliverable	
Item number	116
Associated laws	59-23-220; 59-23-230; 59-23-240; 59-23-250; 59-63-910
Does state or federal law specifically require this deliverable?	Yes
Deliverable description	Perform building inspections of South Carolina Schools
Responsible organizational unit (primary)	School Facilities (Division of DOS)
Results Sought	
Does the legislature state intent, findings, or purpose?	Yes
What is specific outcome sought in law OR, if not in law, specific outcome agency seeks by providing the deliverable?	All construction, improvements, and renovation of public school buildings and property must be inspected by the State Superintendent of Education or the superintendent's designee for compliance with the applicable codes and standards. (Section 59-23-220).
Associated performance measure item numbers, if any	Unknown
Customer Details	
Customer description	School Districts; Design Professionals; Contractors; Other State Agencies
Does the agency evaluate customer satisfaction?	2017-18 No
Counties served in last completed fiscal year	2017-18 All
Number of customers served in last completed FY	2017-18 Unknown
Percentage change in customers served predicted for current FY	2018-19 Unknown
Maximum number of potential customers, with unlimited resources	Unknown
Units Provided and Amounts Charged to Customers	
Description of a single deliverable unit	
Number of units provided	2017-18 Unknown
	2016-17 Unknown
	2015-16 Unknown
Does law prohibit charging the customer for the deliverable?	2017-18 No
If yes, provide law	No applicable law
	2016-17 No
If yes, provide law	No applicable law
	2015-16 No
If yes, provide law	No applicable law
Amount charged to customer per deliverable unit	2017-18 \$0.00
	2016-17 \$0.00
	2015-16 \$0.00
Costs	
Total employee equivalents required (37.5 hour per week units)	2017-18 0.75
	2016-17 1.40
	2015-16 1.40
Total deliverable expenditures each year (operational and employee salary/fringe)	2017-18 \$151,884.66
	2016-17 \$775,010.75
	2015-16 \$140,992.92
Total deliverable expenditures as a percentage of total agency expenditures	2017-18 0.00%
	2016-17 0.02%
	2015-16 0.00%
Agency expenditures per unit of the deliverable	2017-18 There were no units provided, no cost, or the agency does not track the number of units provided and/or total cost.
	2016-17 There were no units provided, no cost, or the agency does not track the number of units provided and/or total cost.
	2015-16 There were no units provided, no cost, or the agency does not track the number of units provided and/or total cost.
Amount generated from providing deliverable	
Total collected from charging customers	2017-18 \$0.00
	2016-17 \$0.00
	2015-16 \$0.00
Total collected from non-state sources as a result of providing the deliverable (federal and other grants awarded to agency to provide deliverable)	2017-18 \$0.00
	2016-17 \$0.00
	2015-16 \$0.00
Total collected from charging customers and non-state sources	2017-18 \$0.00
	2016-17 \$0.00
	2015-16 \$0.00
Agency Comments	
Additional comments from agency (optional)	

Deliverables

Agency: South Carolina Department of Education
Accurate as of: 8/12/19

Deliverable		
	Item number	117
	Associated laws	59-23-220; 59-23-230; 59-23-240; 59-23-250; 59-63-910
Does state or federal law specifically require this deliverable?		Yes
Deliverable description		Issue Certificates of Occupancy
Responsible organizational unit (primary)		School Facilities (Division of DOS)
Results Sought		
Does the legislature state intent, findings, or purpose?		Yes
What is specific outcome sought in law OR, if not in law, specific outcome agency seeks by providing the deliverable?		A certificate of approval must be obtained from the State Superintendent of Education or the superintendent's designee before a building may be occupied.(Section 59-23-220).
Associated performance measure item numbers, if any		Unknown
Customer Details		
Customer description		School Districts; Design Professionals; Contractors; Other State Agencies
Does the agency evaluate customer satisfaction?		2017-18 No
Counties served in last completed fiscal year		2017-18 All
Number of customers served in last completed FY		2017-18 Unknown
Percentage change in customers served predicted for current FY		2018-19 Unknown
Maximum number of potential customers, with unlimited resources		Unknown
Units Provided and Amounts Charged to Customers		
Description of a single deliverable unit		
Number of units provided		2017-18 60
		2016-17 Unknown
		2015-16 Unknown
Does law prohibit charging the customer for the deliverable?		2017-18 No
If yes, provide law		No applicable law
		2016-17 No
If yes, provide law		No applicable law
		2015-16 No
If yes, provide law		No applicable law
Amount charged to customer per deliverable unit		2017-18 \$0.00
		2016-17 \$0.00
		2015-16 \$0.00
Costs		
Total employee equivalents required (37.5 hour per week units)		2017-18 1.75
		2016-17 2.10
		2015-16 1.45
Total deliverable expenditures each year (operational and employee salary/fringe)		2017-18 \$151,884.66
		2016-17 \$1,162,516.12
		2015-16 \$146,028.38
Total deliverable expenditures as a percentage of total agency expenditures		2017-18 0.00%
		2016-17 0.03%
		2015-16 0.00%
Agency expenditures per unit of the deliverable		2017-18 \$2,531.41
		2016-17 There were no units provided, no cost, or the agency does not track the number of units provided and/or total cost.
		2015-16 There were no units provided, no cost, or the agency does not track the number of units provided and/or total cost.
Amount generated from providing deliverable		
Total collected from charging customers		2017-18 \$0.00
		2016-17 \$0.00
		2015-16 \$0.00
Total collected from non-state sources as a result of providing the deliverable (federal and other grants awarded to agency to provide deliverable)		2017-18 \$0.00
		2016-17 \$0.00
		2015-16 \$0.00
Total collected from charging customers and non-state sources		2017-18 \$0.00
		2016-17 \$0.00
		2015-16 \$0.00
Agency Comments		
Additional comments from agency (optional)		

Deliverables

Agency: South Carolina Department of Education
Accurate as of: 8/12/19

Deliverable				
	Item number		118	119
	Associated laws		59-67-50; 59-67-100; 59-67-105; 59-67-270; 59-67-420; 59-67-30; 59-67-80; 59-67-90; 59-67-110; 59-67-250; 59-67-580; 59-63-1360; 1.15	1.20; 1.51; 59-67-580
	Does state or federal law specifically require this deliverable?		Yes	Yes
	Deliverable description		Maintain and operate the bus fleet for school districts through county bus shops	Purchase school buses for the entire public school system of South Carolina
	Responsible organizational unit (primary)		Transportation (Division of DOS)	Transportation (Division of DOS)
Results Sought				
	Does the legislature state intent, findings, or purpose?		Yes	Yes
	What is specific outcome sought in law OR, if not in law, specific outcome agency seeks by providing the deliverable?		The Department of Education School Bus Maintenance Shops shall be permitted, on a cost reimbursable-plus basis, to deliver transportation maintenance and services to vehicles owned or operated by public agencies in South Carolina. (Proviso 1.15).	With funds appropriated by the General Assembly for school bus purchases, the State Board of Education shall implement a school bus replacement cycle to replace approximately one-fifteenth of the fleet each year with new school buses, resulting in a complete replacement of the fleet every fifteen years. (Section 59-67-580).
	Associated performance measure item numbers, if any		6.1.1; 6.1.2; 6.1.3; 6.1.4; 6.1.5; 6.1.6; 6.1.7	Unknown
Customer Details				
	Customer description		School Districts; Schools	School Districts; Schools
	Does the agency evaluate customer satisfaction?	2017-18	No	No
	Counties served in last completed fiscal year	2017-18	All	All
	Number of customers served in last completed FY	2017-18	All School Districts	All School Districts
	Percentage change in customers served predicted for current FY	2018-19	0.00%	0.00%
	Maximum number of potential customers, with unlimited resources		All School Districts	All School Districts
Units Provided and Amounts Charged to Customers				
	Description of a single deliverable unit		One bus shop	One bus
	Number of units provided	2017-18	42	1,306
		2016-17	42	779
		2015-16	42	220
	Does law prohibit charging the customer for the deliverable?	2017-18	No	No
	If yes, provide law		No applicable law	No applicable law
		2016-17	No	No
	If yes, provide law		No applicable law	No applicable law
		2015-16	No	No
	If yes, provide law		No applicable law	No applicable law
	Amount charged to customer per deliverable unit	2017-18	\$0.00	\$0.00
		2016-17	\$0.00	\$0.00
		2015-16	\$0.00	\$0.00
Costs				
	Total employee equivalents required (37.5 hour per week units)	2017-18	400.00	1.00
		2016-17	400.00	1.00
		2015-16	400.00	1.00
	Total deliverable expenditures each year (operational and employee salary/fringe)	2017-18	\$48,280,533.59	\$74,402,900.00
		2016-17	\$42,199,012.33	\$63,653,872.00
		2015-16	\$47,944,819.63	\$1,079,221.00
	Total deliverable expenditures as a percentage of total agency expenditures	2017-18	1.03%	1.59%
		2016-17	0.93%	1.40%
		2015-16	1.17%	0.03%
	Agency expenditures per unit of the deliverable	2017-18	\$1,149,536.51	\$56,970.06
		2016-17	\$1,004,738.39	\$81,712.29
		2015-16	\$1,141,543.32	\$4,905.55
Amount generated from providing deliverable				
	Total collected from charging customers	2017-18	\$0.00	\$0.00
		2016-17	\$0.00	\$0.00
		2015-16	\$0.00	\$0.00
	Total collected from non-state sources as a result of providing the deliverable (federal and other grants awarded to agency to provide deliverable)	2017-18	\$6,547,315.24	\$0.00
		2016-17	\$6,666,734.09	\$0.00
		2015-16	\$8,946,702.13	\$0.00
	Total collected from charging customers and non-state sources	2017-18	\$6,547,315.24	\$0.00
		2016-17	\$6,666,734.09	\$0.00
		2015-16	\$8,946,702.13	\$0.00
Agency Comments				
	Additional comments from agency (optional)			

Deliverables

Agency: South Carolina Department of Education
Accurate as of: 8/12/19

Deliverable			120	121
	Item number		1.15; 59-67-90; 59-67-585	59-67-108; 59-67-425; 59-67-515; 59-67-520; 43-242; 59-67-470
	Associated laws			
	Does state or federal law specifically require this deliverable?		Yes	Yes
	Deliverable description		Purchase and provide fuel for school buses to county bus shops	Provide training to school bus drivers and support school districts
	Responsible organizational unit (primary)		Transportation (Division of DOS)	Transportation (Division of DOS)
Results Sought				
	Does the legislature state intent, findings, or purpose?		Yes	Yes
	What is specific outcome sought in law OR, if not in law, specific outcome agency seeks by providing the deliverable?		School buses operated by school districts, other governmental agencies or head start agencies for the purpose of transporting students for school or school related activities shall not be subject to state motor fuel taxes. Further, that school districts, other governmental agencies or head start agencies may purchase this fuel, on a cost reimbursable-plus basis, from the Department of Education School Bus Maintenance Shops. (Proviso 1.15).	The State Board of Education shall provide a rigid school bus driver training course and issue special "school bus driver's certificates" to successful candidates. No person shall be authorized to drive a school bus in this State transporting children, whether the bus be owned by the State, by a local school agency, or by a private contractor, who has not been so certified by the State Board of Education. (Section 59-67-470).
	Associated performance measure item numbers, if any		Unknown	Unknown
Customer Details				
	Customer description		School Districts; County Bus Shop	School Districts; Schools
	Does the agency evaluate customer satisfaction?	2017-18	No	No
	Counties served in last completed fiscal year	2017-18	All	All
	Number of customers served in last completed FY	2017-18	All county bus shops	Unknown
	Percentage change in customers served predicted for current FY	2018-19	0.00%	Unknown
	Maximum number of potential customers, with unlimited resources		All county bus shops	Unknown
Units Provided and Amounts Charged to Customers				
	Description of a single deliverable unit		A gallon of fuel	A training or class offered for bus drivers
	Number of units provided	2017-18	10,571,277	392
		2016-17	8,945,810	392
		2015-16	10,141,340	441
	Does law prohibit charging the customer for the deliverable?	2017-18	No	No
	If yes, provide law	2016-17	No applicable law	No applicable law
		2015-16	No	No
	If yes, provide law	2016-17	No applicable law	No applicable law
		2015-16	No	No
	If yes, provide law	2016-17	No applicable law	No applicable law
	Amount charged to customer per deliverable unit	2017-18	\$0.00	\$0.00
		2016-17	\$0.00	\$0.00
		2015-16	\$0.00	\$0.00
Costs				
	Total employee equivalents required (37.5 hour per week units)	2017-18	2.00	7.00
		2016-17	2.00	7.00
		2015-16	2.00	7.00
	Total deliverable expenditures each year (operational and employee salary/fringe)	2017-18	\$25,873,614.04	\$414,193.00
		2016-17	\$14,331,296.00	\$434,902.00
		2015-16	\$17,911,774.00	\$447,949.00
	Total deliverable expenditures as a percentage of total agency expenditures	2017-18	0.55%	0.01%
		2016-17	0.32%	0.01%
		2015-16	0.44%	0.01%
	Agency expenditures per unit of the deliverable	2017-18	\$2.45	\$1,056.61
		2016-17	\$1.60	\$1,109.44
		2015-16	\$1.77	\$1,015.76
Amount generated from providing deliverable				
	Total collected from charging customers	2017-18	\$0.00	\$0.00
		2016-17	\$0.00	\$0.00
		2015-16	\$0.00	\$0.00
	Total collected from non-state sources as a result of providing the deliverable (federal and other grants awarded to agency to provide deliverable)	2017-18	\$380,002.82	\$0.00
		2016-17	\$492,929.88	\$0.00
		2015-16	\$352,898.00	\$0.00
	Total collected from charging customers and non-state sources	2017-18	\$380,002.82	\$0.00
		2016-17	\$492,929.88	\$0.00
		2015-16	\$352,898.00	\$0.00
Agency Comments				
	Additional comments from agency (optional)			

Deliverables

Agency: South Carolina Department of Education
Accurate as of: 8/12/19

Deliverable				
Item number		122	123	
Associated laws		1.16; 59-67-120;	59-67-300; 59-67-535	
Does state or federal law specifically require this deliverable?		Yes	Yes	
Deliverable description		Engineering Associates - Provide support to the technical aspects of bus shops	Area Supervisors - Responsible for supervising County Supervisors in assigned area bus shops	
Responsible organizational unit (primary)		Transportation (Division of DOS)	Transportation (Division of DOS)	
Results Sought				
Does the legislature state intent, findings, or purpose?		Yes	Yes	
What is specific outcome sought in law OR, if not in law, specific outcome agency seeks by providing the deliverable?		The Department of Education School Bus Maintenance Shops shall be permitted, on a cost reimbursable-plus basis, to deliver transportation maintenance and services to vehicles owned or operated by public agencies in South Carolina. (Proviso 1.15).	The Department of Education School Bus Maintenance Shops shall be permitted, on a cost reimbursable-plus basis, to deliver transportation maintenance and services to vehicles owned or operated by public agencies in South Carolina. (Proviso 1.15).	
Associated performance measure item numbers, if any		Unknown	Unknown	
Customer Details				
Customer description		County Bus Shops	County Bus Shops	
Does the agency evaluate customer satisfaction?		2017-18 No	No	
Counties served in last completed fiscal year		2017-18 All	All	
Number of customers served in last completed FY		2017-18 All county bus shops	All county bus shops	
Percentage change in customers served predicted for current FY		2018-19 0.00%	100.00%	
Maximum number of potential customers, with unlimited resources		All county bus shops	All county bus shops	
Units Provided and Amounts Charged to Customers				
Description of a single deliverable unit		Bus shop where an engineering associate provides support	An area supervisor who is responsible for a designated region of the state	
Number of units provided		2017-18 42	5	
		2016-17 42	5	
		2015-16 42	5	
Does law prohibit charging the customer for the deliverable?		2017-18 No	No	
If yes, provide law		No applicable law	No applicable law	
		2016-17 No	No	
If yes, provide law		No applicable law	No applicable law	
		2015-16 No	No	
If yes, provide law		No applicable law	No applicable law	
Amount charged to customer per deliverable unit		2017-18 \$0.00	\$0.00	
		2016-17 \$0.00	\$0.00	
		2015-16 \$0.00	\$0.00	
Costs				
Total employee equivalents required (37.5 hour per week units)		2017-18 6.00	3.00	
		2016-17 6.00	3.00	
		2015-16 6.00	3.00	
Total deliverable expenditures each year (operational and employee salary/fringe)		2017-18 \$505,779.00	\$292,924.00	
		2016-17 \$498,880.00	\$285,600.00	
		2015-16 \$515,632.00	\$282,568.00	
Total deliverable expenditures as a percentage of total agency expenditures		2017-18 0.01%	0.01%	
		2016-17 0.01%	0.01%	
		2015-16 0.01%	0.01%	
Agency expenditures per unit of the deliverable		2017-18 \$12,042.36	\$58,584.80	
		2016-17 \$11,878.10	\$57,120.00	
		2015-16 \$12,276.95	\$56,513.60	
Amount generated from providing deliverable				
Total collected from charging customers		2017-18 \$0.00	\$0.00	
		2016-17 \$0.00	\$0.00	
		2015-16 \$0.00	\$0.00	
Total collected from non-state sources as a result of providing the deliverable (federal and other grants awarded to agency to provide deliverable)		2017-18 \$0.00	\$0.00	
		2016-17 \$0.00	\$0.00	
		2015-16 \$0.00	\$0.00	
Total collected from charging customers and non-state sources		2017-18 \$0.00	\$0.00	
		2016-17 \$0.00	\$0.00	
		2015-16 \$0.00	\$0.00	
Agency Comments				
Additional comments from agency (optional)				

ASSOCIATED PERFORMANCE MEASURES

Performance Measures

Agency: South Carolina Department of Education

Accurate as of 8/12/19

Performance Measure		
	Item #	5.4.1
	Description	Percent of adult education directors and teachers attending training
	Time applicable	State Fiscal Year (July - June)
Results Summary		
Is the goal to meet, exceed, or obtain a lower value than the target?		Meet or exceed
Did the agency achieve its goal		
	2018	No
	2017	There was no target
	2016	There was no target
	2015	There was no target
	2014	There was no target
Changes in target		
	2019	Same as prior year
	2018	No prior year target
	2017	No prior year target
	2016	No prior year target
	2015	No prior year target
Result details for year ending... (Note: DNE means "did not exist")		
2019 (18-19)		
	Target	100%
2018 (17-18)		
	Target	100%
	Actual	47%
2017 (16-17)		
	Target	DNE
	Actual	DNE
2016 (15-16)		
	Target	DNE
	Actual	DNE
2015 (14-15)		
	Target	DNE
	Actual	DNE
2014 (13-14)		
	Target	DNE
	Actual	DNE
Agency Comments		
Additional comments from agency (optional)		Strategy 5.4: Support increased student access to opportunities to develop world class knowledge, skills, and citizenship.

Performance Measures

Agency: South Carolina Department of Education

Accurate as of 8/12/19

Performance Measure		
	Item #	5.4.2
Description	Number of elementary schools that request access to Career Trek via SCOIS	
Time applicable	State Fiscal Year (July - June)	
Results Summary		
Is the goal to meet, exceed, or obtain a lower value than the target?	Meet or exceed	
Did the agency achieve its goal		
2018	No	
2017	Yes	
2016	There was no target	
2015	There was no target	
2014	There was no target	
Changes in target		
2019	Same as prior year	
2018	Increased from prior year	
2017	No prior year target	
2016	No prior year target	
2015	No prior year target	
Result details for year ending... (Note: DNE means "did not exist")		
2019 (18-19)		
Target	150	
2018 (17-18)		
Target	150	
Actual	124	
2017 (16-17)		
Target	100	
Actual	106	
2016 (15-16)		
Target	DNE	
Actual	DNE	
2015 (14-15)		
Target	DNE	
Actual	DNE	
2014 (13-14)		
Target	DNE	
Actual	DNE	
Agency Comments		
Additional comments from agency (optional)		

Performance Measures

Agency: South Carolina Department of Education

Accurate as of 8/12/19

Performance Measure			
Item #	6.1.2	6.1.3	6.1.4
Description	Average operating miles per bus	Number of transportation service calls	Turnover rate for bus shop mechanics
Time applicable	State Fiscal Year (July - June)	State Fiscal Year (July - June)	State Fiscal Year (July - June)
Results Summary			
Is the goal to meet, exceed, or obtain a lower value than the target?	Meet or obtain lower value	Meet or obtain lower value	Obtain lower value
Did the agency achieve its goal			
2018	No	Yes	No
2017	No	Yes	No
2016	Yes	No	No
2015	No	No	No
2014	No	No	No
Changes in target			
2019	Same as prior year	Decreased from prior year	Increased from prior year
2018	Same as prior year	Decreased from prior year	Increased from prior year
2017	Decreased from prior year	Decreased from prior year	Decreased from prior year
2016	Same as prior year	Same as prior year	Same as prior year
2015	Same as prior year	Same as prior year	Same as prior year
Result details for year ending... (Note: DNE means "did not exist")			
2019 (18-19)			
Target	14,000	8,500	24.1%
2018 (17-18)			
Target	14,000	12,000	15.9%
Actual	14,956	9,357	24.1%
2017 (16-17)			
Target	14,000	13,500	14.9%
Actual	14,600	13,026	16.9%
2016 (15-16)			
Target	15,000	14,000	15.0%
Actual	14,400	14,321	15.9%
2015 (14-15)			
Target	15,000	14,000	15.0%
Actual	15,789	16,547	20.00%
2014 (13-14)			
Target	15,000	14,000	15.00%
Actual	15,283	14,440	17.00%
Agency Comments			
Additional comments from agency (optional)			

Performance Measures

Agency: South Carolina Department of Education

Accurate as of 8/12/19

Performance Measure			
Item #	6.1.5	6.1.6	6.1.7
Description	Number of youth apprentices successfully completing program	Number of bus driver-caused accidents	Number of district route ride times that exceed 90 minutes
Time applicable	State Fiscal Year (July - June)	State Fiscal Year (July - June)	State Fiscal Year (July - June)
Results Summary			
Is the goal to meet, exceed, or obtain a lower value than the target?	Meet or exceed	Obtain lower value	Meet or obtain lower value
Did the agency achieve its goal			
2018	Yes	No	No
2017	There was no target	Yes	Yes
2016	There was no target	No	Yes
2015	There was no target	There was no target	There was no target
2014	There was no target	There was no target	There was no target
Changes in target			
2019	Increased from prior year	Increased from prior year	Increased from prior year
2018	No prior year target	Decreased from prior year	Decreased from prior year
2017	No prior year target	Increased from prior year	Decreased from prior year
2016	No prior year target	No prior year target	No prior year target
2015	No prior year target	No prior year target	No prior year target
Result details for year ending... (Note: DNE means "did not exist")			
2019 (18-19)			
Target	4	500	1000
2018 (17-18)			
Target	1	300	450
Actual	3	649	1464
2017 (16-17)			
Target	DNE	390	600
Actual	1	307	469
2016 (15-16)			
Target	DNE	382	887
Actual	DNE	398	663
2015 (14-15)			
Target	DNE	DNE	DNE
Actual	DNE	DNE	DNE
2014 (13-14)			
Target	DNE	DNE	DNE
Actual	DNE	DNE	DNE
Agency Comments			
Additional comments from agency (optional)			

Performance Measures

Agency: South Carolina Department of Education

Accurate as of 8/12/19

Performance Measure			
Item #	6.2.1	6.2.2	6.2.3
Description	Number of training courses provided to support local implementation of USDA nutritional requirements	Number of school gardens	Number of summer food sites
Time applicable	State Fiscal Year (July - June)	State Fiscal Year (July - June)	State Fiscal Year (July - June)
Results Summary			
Is the goal to meet, exceed, or obtain a lower value than the target?	Meet or exceed	Meet or exceed	Meet or exceed
Did the agency achieve its goal			
2018	Yes	No	No
2017	Yes	There was no target	Yes
2016	No	There was no target	No
2015	There was no target	There was no target	No
2014	There was no target	There was no target	Yes
Changes in target			
2019	Increased from prior year	Same as prior year	Same as prior year
2018	Increased from prior year	No prior year target	Increased from prior year
2017	Same as prior year	No prior year target	Increased from prior year
2016	No prior year target	No prior year target	Decreased from prior year
2015	No prior year target	No prior year target	Increased from prior year
Result details for year ending... (Note: DNE means "did not exist")			
2019 (18-19)			
Target	61	20	2,500
2018 (17-18)			
Target	60	20	2,500
Actual	61	0	2,384
2017 (16-17)			
Target	10	DNE	2,049
Actual	61	0	2,516
2016 (15-16)			
Target	10	DNE	1,982
Actual	8	DNE	1,952
2015 (14-15)			
Target	DNE	DNE	2,300
Actual	DNE	DNE	2,261
2014 (13-14)			
Target	DNE	DNE	1,400
Actual	DNE	DNE	1,408
Agency Comments			
Additional comments from agency (optional)	Strategy 6.2: Provide and support a healthy learning environment by ensuring access to nutritious meals.		

Performance Measures

Agency: South Carolina Department of Education

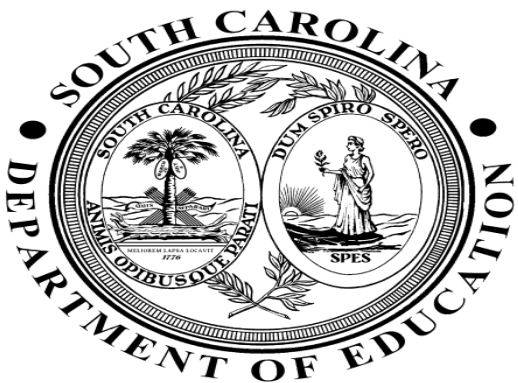
Accurate as of 8/12/19

Performance Measure			
Item #	6.3.1	6.3.2	6.3.3
Description	Number of school climate and/or bullying technical assistance opportunities provided.	Number of districts with major Medicaid discrepancies	Number of districts served through the Process Improvement Team (PIT)
Time applicable	State Fiscal Year (July - June)	State Fiscal Year (July - June)	State Fiscal Year (July - June)
Results Summary			
Is the goal to meet, exceed, or obtain a lower value than the target?	Meet or exceed	Meet or obtain lower value	Meet or obtain lower value
Did the agency achieve its goal			
2018	Yes	Yes	Yes
2017	There was no target	Yes	There was no target
2016	There was no target	There was no target	There was no target
2015	There was no target	There was no target	There was no target
2014	There was no target	There was no target	There was no target
Changes in target			
2019	Same as prior year	Decreased from prior year	Same as prior year
2018	No prior year target	Decreased from prior year	No prior year target
2017	No prior year target	No prior year target	No prior year target
2016	No prior year target	No prior year target	No prior year target
2015	No prior year target	No prior year target	No prior year target
Result details for year ending... (Note: DNE means "did not exist")			
2019 (18-19)			
Target	8	23	2
2018 (17-18)			
Target	8	24	2
Actual	11	18	2
2017 (16-17)			
Target	DNE	25	DNE
Actual	8	18	0
2016 (15-16)			
Target	DNE	DNE	DNE
Actual	DNE	30	DNE
2015 (14-15)			
Target	DNE	DNE	DNE
Actual	DNE	DNE	DNE
2014 (13-14)			
Target	DNE	DNE	DNE
Actual	DNE	DNE	DNE
Agency Comments			
Additional comments from agency (optional)	Strategy 6.3: Support schools in developing positive and supportive climates for learning		

AGENCY PRESENTATION:

DIVISION OF EDUCATOR, COMMUNITY, AND FEDERAL RESOURCES

DIVISION OF DISTRICT OPERATIONS AND SUPPORT



Division of Educator, Community, and Federal Resources

Legislative Oversight Subcommittee
Meeting

December 19, 2019

12.19.19 Meeting Packet Page58

Molly M. Spearman – State Superintendent of Education



Office of Adult Education

Michael King, M.Ed., MBA
Director



Mission

The mission of adult education in South Carolina is to: 1) assist adults in becoming literate and obtaining the knowledge and skills necessary for employment and self-sufficiency; 2) assist adults who are parents to obtain the educational skills necessary for them to become full partners in the educational development of their children; and 3) assist adults in the completion of a secondary-school education.



Employee Turnover Rate

Number of Employees (all types) in the unit	
<u>Start of fiscal year</u>	-
2017-18	15
2016-17	18
2015-16	18
<u>End of fiscal year</u>	-
2017-18	20
2016-17	15
2015-16	18
<u>Leave the unit during fiscal year</u>	-
2017-18	3
2016-17	8
2015-16	8
<u>Turnover rate</u>	-
2017-18	17.14%
2016-17	48.48%
2015-16	44.44%



Deliverable #45

The office provides the following services:

- verification of secondary school completion;
- copies and replacements of high school equivalency diplomas; and
- copies and replacements of high school equivalency diploma transcripts.



Deliverable #45 Cont'd.

Single Unit Description: A replacement **Units Provided:**

copy of a diploma and/or transcript was issued and/or verification provided.

- **2017-2018:** Do not track
- **2016-2017:** Do not track
- **2015-2016:** Do not track

Total Deliverable Expenditures (operational and employee salary/fringe):

- **2017-2018:** \$401,173.75
- **2016-2017:** \$445,678.31
- **2015-2016:** \$495,573.41

Total deliverable expenditures as a percentage of total agency expenditures:

- **2017-2018:** 0.01%
- **2016-2017:** 0.01%
- **2015-2016:** 0.01%

Total employee equivalents required:

- **2017-2018:** 6.50
- **2016-2017:** 6.50
- **2015-2016:** 7.00

Total collected from charging customers and non-state sources:

- **2017-18:** \$202,665.00
- **2016-17:** \$228,968.50
- **2015-16:** \$219,066.87



Intent

S.C. Code Ann 59-43-20

The State Board of Education is also responsible for the administration, coordination, and management of adult basic and adult secondary (GED, alternate testing, and high school diploma) education for the purpose of facilitating and coordinating adult basic and adult secondary (GED, alternate testing, and high school diploma) education programs for South Carolina adults whose level of educational attainment is below high school, as prescribed by state and federal laws and regulations. (Section 59-43-20 (B)).



Deliverable #46

The office provides the following services:

- Monitoring and technical assistance of the following grants provided to districts;
- Adult Education;
- Corrections Education;
- Generational Family Services; and
- Integrated English Literacy and Civics Education.



Deliverable #46 Cont'd.

Single Unit Description: Technical assistance provided and monitoring occurred.

Total Deliverable Expenditures (operational and employee salary/fringe):

- **2017-2018:** \$457,228.89
- **2016-2017:** \$427,887.74
- **2015-2016:** \$371,776.23

Total deliverable expenditures as a percentage of total agency expenditures:

- **2017-2018:** 0.01%
- **2016-2017:** 0.01%
- **2015-2016:** 0.01%

Units Provided:

- **2017-2018:** Do not track
- **2016-2017:** Do not track
- **2015-2016:** Do not track

Total employee equivalents required:

- **2017-2018:** 13.50
- **2016-2017:** 8.50
- **2015-2016:** 11.00

Total collected from charging customers and non-state sources:

- **2017-18:** \$0.00
- **2016-17:** \$0.00
- **2015-16:** \$0.00



Deliverable #47

The office provides the following service:

- Trainings and support regarding adult education for each program year to districts.



Deliverable #47 Cont'd.

Single Unit Description: Training and support as provided

Total Deliverable Expenditures
(operational and employee salary/fringe):

- **2017-2018:** \$457,228.89
- **2016-2017:** \$427,887.74
- **2015-2016:** \$371,776.23

Total deliverable expenditures as a percentage of total agency expenditures:

- **2017-2018:** 0.01%
- **2016-2017:** 0.01%
- **2015-2016:** 0.01%

Units Provided:

- **2017-2018:** Do not track
- **2016-2017:** Do not track
- **2015-2016:** Do not track

Total employee equivalents required:

- **2017-2018:** 13.50
- **2016-2017:** 8.50
- **2015-2016:** 11.00

Total collected from charging customers and non-state sources:

- **2017-18:** \$0.00
- **2016-17:** \$0.00
- **2015-16:** \$0.00



Deliverable #48

The office provides the following service:

- Support and oversight of the Young Adult Program (YAP) Proviso for 17 to 21 year olds in adult education.



Deliverable #48 Cont'd.

Single Unit Description: Support and oversight was provided.

Total Deliverable Expenditures (operational and employee salary/fringe):

- **2017-2018:** \$457,228.89
- **2016-2017:** \$427,887.74
- **2015-2016:** \$371,776.23

Total deliverable expenditures as a percentage of total agency expenditures:

- **2017-2018:** 0.01%
- **2016-2017:** 0.01%
- **2015-2016:** 0.01%

Units Provided:

- **2017-2018:** Do not track
- **2016-2017:** Do not track
- **2015-2016:** Do not track

Total employee equivalents required:

- **2017-2018:** 13.50
- **2016-2017:** 8.50
- **2015-2016:** 11.00

Total collected from charging customers and non-state sources:

- **2017-18:** \$0.00
- **2016-17:** \$0.00
- **2015-16:** \$0.00



Intent

S.C. Code Ann 59-43-20

A minimum of thirty percent of the funds appropriated for adult education must be allocated to school districts to serve adult education students between the ages of seventeen and twenty-one who are enrolled in programs leading to a state high school diploma, state high school equivalency diploma, or career readiness certificate (Proviso 1A.27).



Office of Family and Community Engagement (FACE)

Yolandé Anderson, MHRM, MHA
Director

FACE Mission

The mission of the Office of Family and Community Engagement (FACE) is to support partnerships between community organizations, families, and schools in an effort to coordinate access of resources for all students in South Carolina.

The “Shift”

In K–12 education, the focus on “parental involvement” has radically shifted to “parent engagement.”

S.C. Code § 59-28-150

SECTION 59-28-150. State Superintendent of Education activities to promote parental involvement.

The State Superintendent of Education shall:

- (1) promote parental involvement as a priority for all levels from pre-K through grade 12, with particular emphasis at the middle and high school levels where parental involvement is currently least visible;
- (2) designate a Department of Education staff position whose specific role is to coordinate statewide initiatives to support school and district parental involvement;
- (3) collect and disseminate to districts and schools practices shown by research to be effective in increasing parental involvement at all grade levels;
- (4) provide parental involvement staff development training for district and school liaisons, as needed;
- (5) provide technical assistance relating to parental involvement training to districts and schools;
- (6) sponsor statewide conferences on best practices;
- (7) identify, recommend, and implement ways to integrate programs and funding for maximum benefit to enhance parental involvement;
- (8) enroll the Department of Education as a state member of national organizations which promote proven parental involvement frameworks, models, and practices and provide related services to state and local members;
- (9) promote and encourage local school districts to join national parental involvement organizations; and
- (10) monitor and evaluate parental involvement programs statewide by designing a statewide system which will determine program effectiveness and identify best practices and report evaluation findings and implications to the General Assembly, State Board of Education, and Education Oversight Committee.

S.C. Code § 59-46-50

SECTION 59-46-50. Interstate Compact on Educational Opportunity for Military Children.

The Interstate Compact on Educational Opportunity for Military Children is enacted into law and entered into with all other jurisdictions legally joining in the compact in the form substantially as follows:

INTERSTATE COMPACT ON EDUCATIONAL OPPORTUNITY FOR MILITARY CHILDREN

ARTICLE I

PURPOSE

It is the purpose of this compact to remove barriers to educational success imposed on children of military families because of frequent moves and deployment of their parents by:

A. Facilitating the timely enrollment of children of military families and ensuring that they are not placed at a disadvantage due to difficulty in the transfer of education records from the previous school districts or variations in entrance/age requirements.

B. Facilitating the student placement process through which children of military families are not disadvantaged by variations in attendance requirements, scheduling, sequencing, grading, course content, or assessment.

C. Facilitating the qualification and eligibility for enrollment, educational programs, and participation in extracurricular academic, athletic, and social activities.

D. Facilitating the on-time graduation of children of military families.

E. Providing for the promulgation and enforcement of administrative rules implementing the provisions of this compact.

F. Providing for the uniform collection and sharing of information between and among member states, schools, and military families under this compact.

G. Promoting coordination between this compact and other compacts affecting military children.

H. Promoting flexibility and cooperation between the educational system, parents, and the student in order to achieve educational success for the student.



Deliverable #37

Single Unit Description: Regional trainings provided.

Total Deliverable Expenditures (operational and employee salary/fringe):

- **2017-2018:** \$161,268.46
- **2016-2017:** \$149,092.45
- **2015-2016:** \$40,703.64

Turnover Rate: 0% (2016 to present)

Units Provided:

- **2017-2018:** 9
- **2016-2017:** (63 partnership meetings held)
- **2015-2016:** January 2016 Office started with Director; May 2016 added FTE.

Total employee equivalents required:

- **2017-2018:** 2
- **2016-2017:** 2
- **2015-2016:** 2

Regional Trainings Survey Data

OVERALL RELEVANCE AND QUALITY OF TRAINING

97.2% of Participants responded the information presented was relevant and useful

94.5% of Participants responded the information was delivered in an engaging way

96% of Participants responded the training will help me to carry out the family engagement- responsibilities of my position more effectively

Next Steps

- ✓ Continue offering family engagement trainings
- ✓ Host 2nd Annual Family Engagement Statewide Summit on April 3, 2020.
- ✓ Continue to support military families through Military Interstate Children's Compact Commission (MIC3) and the Purple Star Designation initiative.

Division of District Operations and Support – Virgie Chambers

The mission of the Division of District Operations and Support is to provide operational support, through direct or enterprise service delivery, and guidance to school districts to support student health and safe learning environments.

The Office of Medicaid Services (OMS)

The Office of Transportation

The Office of Health and Nutrition (OHN)

The Office of School Facilities (OSF)

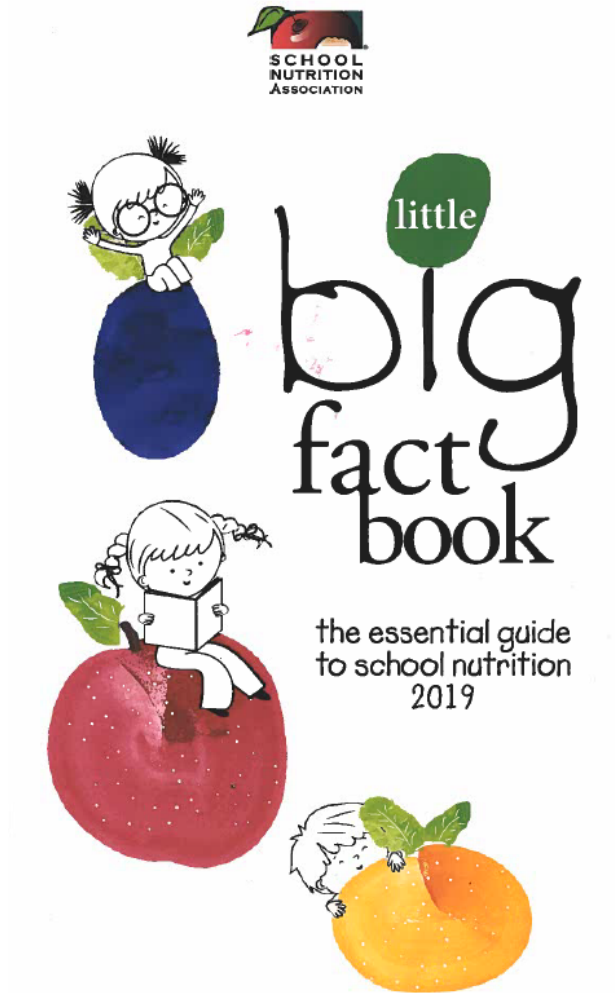
Office of Health and Nutrition

Ronald Jones

The mission of the Office of Health and Nutrition is to support districts and schools in the adoption, implementation, and compliance with effective policies, practices, and programs that support student health and nutrition for optimum academic achievement and well-being.

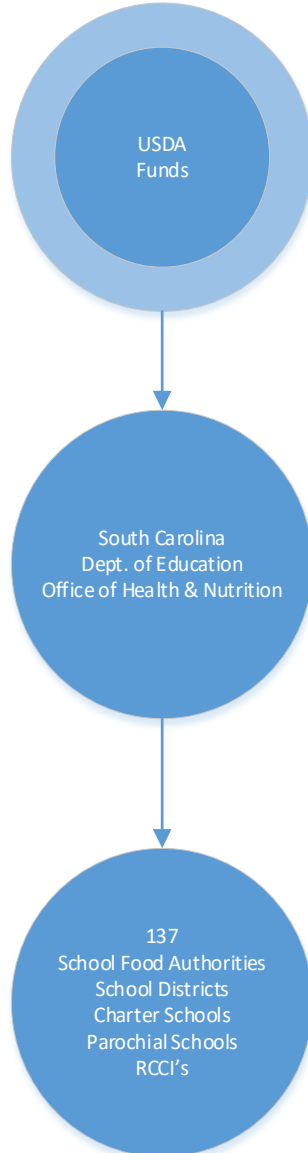
USDA Compliance Monitoring
Technical Assistance

A School Meal Resource For You



- Overview of National School Lunch and Breakfast Programs
- Federal Regulations
- Funding
- Opportunities and Challenges

The Role of the Office of Health and Nutrition



- 2018/19 SAE Funds = \$3,494,982.00
- Meal Reimbursements = \$314,722,081.00
- USDA Foods = \$27,000,000.00
- State Funds = <\$200,000.00

USDA Reimbursement Rates

- These reimbursement rates are effective from July 1, 2019, through June 30, 2020.

Lunch

- Paid - \$0.32
- Reduced - \$3.01
- Free - \$3.41

- Districts serving at least 60 percent free and reduced-price lunches in school year 2017-2018 will receive a 2-cent supplemental lunch reimbursement. In addition, contracting entities certified to receive the performance-based cash assistance will receive an additional 7 cents added to the lunch reimbursement.

- These reimbursement rates are effective from July 1, 2019, through June 30, 2020.

Breakfast

- Paid - \$0.31
- Reduced - \$1.54
- Free - \$1.84

Breakfast - Severe Need*

- Reduced - \$0.36
- Free - \$0.36
- For a site to be eligible, at least 40 percent of its total lunches served in school year 2017-2018 must have been free or reduced.

USDA Foods

- **USDA Foods Published Rate Of Assistance**
- SY 2020 Commodity Meal Rate – The published rate for the period July 1, 2019, to June 30, 2020, is \$0.2375 for NSLP schools.
- USDA added an additional \$0.125 to the SY 2020 Commodity Meal Rate to include the shortfall in USDA purchases for SY 2019 for a national rate of **\$0.3625** cents per meal.

Employee Turnover Rate FTE's

Reporting Year	Number of employees in the unit
<u>Start of fiscal year</u>	
2017-18	25
2016-17	17
2015-16	19
<u>End of fiscal year</u>	
2017-18	24
2016-17	25
2015-16	17
<u>Left the unit during fiscal year</u>	
2017-18	2
2016-17	4
2015-16	5
Turnover rate	
2017-18	8.16%
2016-17	19.05%
2015-16	27.78%

Employee Turnover Rate Including Temps

Reporting Year	Number of employees in the unit
<u>Start of fiscal year</u>	
2017-18	37
2016-17	32
2015-16	30
<u>End of fiscal year</u>	
2017-18	38
2016-17	37
2015-16	32
<u>Leave the unit during fiscal year</u>	
2017-18	6
2016-17	13
2015-16	14
Turnover rate	
2017-18	16.00%
2016-17	37.68%
2015-16	45.16%

Deliverable #106: Provide support and training to school districts regarding Health and Nutrition programs.

12.19.19 Meeting Packet Page87

	Total Deliverable Expenditures	Total Deliverable as % of Agency Expenditures	Units Provided	Total Employee Equivalents Required
2017/18	\$1,038,752.49	0.02%	Trainings include, but are not limited to: <ul style="list-style-type: none"> - Director Training - New SFA Training - HACCP - Produce Safety - DC System - ServSafe - 6 cent Workshop - Area Meetings Misc. content - New Managers Training - SIFT Training 5 days - Leadership Training - State Meeting Training Annually - Misc. training by request as needed 	14
2016/17	\$ 804,505.31	0.02%		13
2015/16	\$ 996,689.45	0.02%		12

Deliverable #106:

Provide support and training to school districts regarding Health and Nutrition Programs.

Training 2018/19	# of Sessions
SNA of SC	20
Regional HACCP	5
New Directors	2
Area Meetings	5
New Managers	2
Produce Safety	2
New SFA	2
ServSafe	3
6 Cent Workshop	2
SIFT	48
Leadership	1
Procurement	1
Annual Visits	30

SC Key Performance Indicators



- Tracking Key Business Metrics
 - Cost of Food
 - Cost of Labor
 - Cost of Supplies
 - Meal Participation Rates

Deliverable #107:

Approve all summer feeding sites and sponsors.

	Total Deliverable Expenditures	Total Deliverable as % of Agency Expenditures	Units Provided SFSP Sites	Total Employee Equivalents Required
2017/18	\$983,530.61	0.02%	2010	5
2016/17	\$929,194.42	0.02%	1919	5
2015/16	\$900,035.52	0.02%	1700	4

Deliverable #108:

Monitor all School Nutrition Programs.

	Total Deliverable Expenditures	Total Deliverable as % of Agency Expenditures	Units Provided	Total Employee Equivalents Required
2017/18	\$1,036,071.14	2%	111	14
2016/17	\$1,330,551.23	3%	91	13
2015/16	\$ 994,641.62	2%	139	12

Deliverable #109:
Oversee and monitor USDA Foods to School Food
Authorities.

	Total Deliverable Expenditures	Total Deliverable as % of Agency Expenditures	Units Provided Pounds of USDA Food	Total Employee Equivalents Required
2017/18	\$711,394.83	2%	5,344,628	3
2016/17	\$804,505.31	2%	9,032,574	4
2015/16	\$859,955.34	2%	8,293,868	4

Deliverable #110:

Monitor USDA Grants for CEP, FFVP and Federal Equipment

	Total Deliverable Expenditures	Total Deliverable as % of Agency Expenditures	Units Provided Grants Provided	Total Employee Equivalents Required
2017/18	\$618,778.83	1%	175	3
2016/17	\$746,345.73	2%	239	4
2015/16	\$748,048.63	2%	188	4

Deliverable #110:

Monitor USDA Equipment Grants FFVP

2016 Equipment Grant – Awarded a total of 16 SFAs, 29 schools

2017 Equipment Grant – Awarded a total of 17 SFAs, 32 schools

2018 Equipment Grant – Awarded a total of 15 SFAs, 27 schools

FY 17-18: FFVP granted to 36 SFAs and 139 schools.

FY 16-17: FFVP granted to 40 SFAs and 199 schools.

FY 15-16: FFVP granted to 40 SFAs and 148 schools.

Deliverable #110 (continued): Monitor USDA Grants for FFVP

School Year	USDA Allocation	Number of Participating Schools
Fiscal Year 2018-19	\$3,620,487.10	169
Fiscal Year 2019-20	\$3,375,412.00	146

USDA ART Grant

- \$925,000.00
- On Line Portal- Food For Thought SC
- Compliance on Administrative Reviews.
- Tools to Build Food Quality

Office Medicaid Services – Virgie Chambers

Mission

The mission of the Office of Medicaid Services is to:

- support school districts in leveraging Medicaid reimbursement to offset health costs associated with certain students;
- provide claims processing services to school districts for Medicaid Administration;
- pursue Medicaid reimbursement to offset the cost of providing special needs transportation services to certain students

Employee Turnover Rate

Number of employees (all types) in the unit	
<u>Start of fiscal year</u>	
2017-18	8
2016-17	7
2015-16	8
<u>End of fiscal year</u>	
2017-18	8
2016-17	8
2015-16	7
<u>Leave the unit during fiscal year</u>	
2017-18	3
2016-17	3
2015-16	1
Turnover rate	
2017-18	37.50%
2016-17	40.00%
2015-16	13.33%

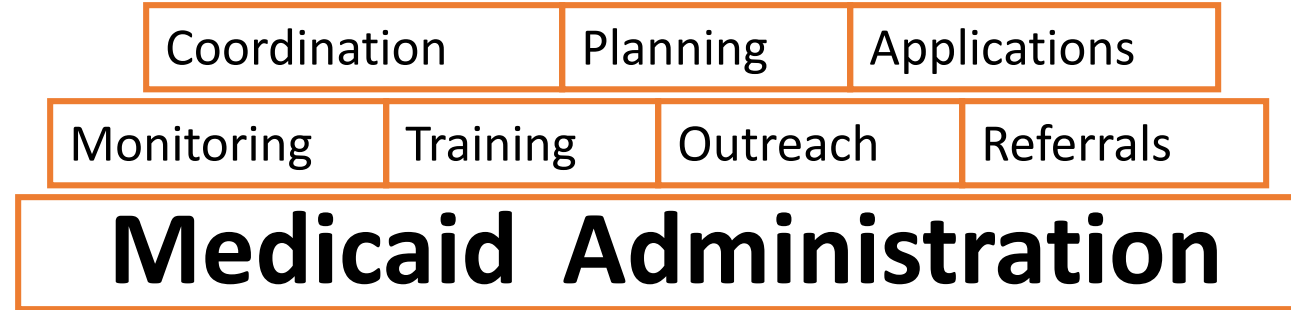
Deliverable #111: Monitor, train, and support school districts in complying with Medicaid billing for school-based services

- **Single Unit Description:** On site/training or technical assistance encounter
- **Total Deliverable Expenditures (operational and employee salary/fringe):**
 - 2017-2018: \$300,650.44
 - 2016-2017: \$341,601.89
 - 2015-2016: \$357,086.77
- **Total deliverable expenditures as a percentage of total agency expenditures:**
 - 2017-2018: 0.01%
 - 2016-2017: 0.01%
 - 2015-2016: 0.01%
- **Units Provided:**
 - 2017-2018: 168
 - 2016-2017: 107
 - 2015-2016: 96
- **Total employee equivalents required:**
 - 2017-2018: 4.80
 - 2016-2017: 4.75
 - 2015-2016: 4.30
- **Total collected from charging customers and non-state sources:**
 - 2017-18: \$0.00
 - 2016-17: \$0.00
 - 2015-16: \$0.00

	School-based Reimbursements
FY 17-18	\$39,796,709
FY 16-17	\$35,588,146
FY 15-16	\$47,065,474
FY 18-19	\$41,593,710

Reimbursable services include Nursing, Audiology, Speech Pathology, Occupational Therapy, Orientation and Mobility, Rehabilitative Behavioral Health Services (RBHS), Diagnostic Assessment, and Telemedicine

School District Administrative Claiming (SDAC)



SDAC is the administration of the Medicaid program that supports direct services and other Medicaid-related items

Deliverable #112: Administration of School District Administrative Claiming (SDAC) program for district Medicaid administrative activities reimbursement

- Single Unit Description: Invoice processed
- Total Deliverable Expenditures (operational and employee salary/fringe):
 - 2017-2018: \$68,899.06
 - 2016-2017: \$80,905.71
 - 2015-2016: \$112,108.64
- Total deliverable expenditures as a percentage of total agency expenditures:
 - 2017-2018: 0.00%
 - 2016-2017: 0.00%
 - 2015-2016: 0.00%
- Units Provided:
 - 2017-2018: 330
 - 2016-2017: 322
 - 2015-2016: 320
- Total employee equivalents required:
 - 2017-2018: 1.10
 - 2016-2017: 1.13
 - 2015-2016: 1.35
- Total collected from charging customers and non-state sources:
 - 2017-18: \$0.00
 - 2016-17: \$0.00
 - 2015-16: \$0.00

SDAC Reimbursements

	SDAC Reimbursements
FY 17-18	\$4,088,704
FY 16-17	\$5,520,147
FY 15-16	\$6,755,219
FY 18-19	\$5,376,759

Special Needs Transportation (SNT)

- SCDE is the authorized Medicaid provider
- SCDE owns special needs buses used to transport students to school and therefore can bill Medicaid as a transportation provider
- Reimbursements:
 - Are shared with school districts (twice a year)
 - Cover 100% of salaries of office state dedicated to the SNT program
 - Support other SCDE agency priorities

Deliverable #113: Medicaid reimbursement for Special Needs Transportation

- **Single Unit Description:** District participating in Special Needs Transportation (SNT)
- **Total Deliverable Expenditures (operational and employee salary/fringe):**
 - 2017-2018: \$131,534.57
 - 2016-2017: \$80,905.71
 - 2015-2016: \$195,152.07
- **Total deliverable expenditures as a percentage of total agency expenditures:**
 - 2017-2018: 0.00%
 - 2016-2017: 0.00%
 - 2015-2016: 0.00%
- **Units Provided:**
 - 2017-2018: 80
 - 2016-2017: 80
 - 2015-2016: 79
- **Total employee equivalents required:**
 - 2017-2018: 2.35
 - 2016-2017: 1.13
 - 2015-2016: 2.10
- **Total collected from charging customers and non-state sources:**
 - 2017-18: \$348,982.35
 - 2016-17: \$154,699.80
 - 2015-16: \$1,751,260.07

SNT Reimbursements

	SNT Reimbursements
FY 17-18	\$400,940
FY 16-17	\$157,957
FY 15-16	\$1,751,866
FY 18-19	\$2,440,940

School Facilities – Jasmeen Shaw

Mission

The mission of the Office of School Facilities (OSF) is to effectively and efficiently ensure a healthy, safe, and appropriate school learning environment for every student when new schools are constructed or existing schools are renovated.

Purpose

OSF serves as the building official for public school facilities in South Carolina. The office is also responsible for the administration of certain building fund programs and provides facility-related technical and educational assistance to a broad group of customers, including school architects, engineers, contractors, and subcontractors.

Employee Turnover Rate

Number of Employees (FTE Only) in the unit

Start of Fiscal Year

2017-2018	7
2016-2017	6
2015-2016	6

End of Fiscal Year

2017-2018	7
2016-2017	7
2015-2016	6

Leave the Unit During Fiscal Year

2017-2018	4
2016-2017	0
2015-2016	0

Turnover Rate

2017-2018	57.14%
2016-2017	0.00%
2015-2016	0.00%

Deliverable #114: Conduct Plan Reviews

- **Single Unit Description:** Plan Review of new construction or renovation project
- **Total Deliverable Expenditures (operational and employee salary/fringe):**
 - 2017-2018: \$238,675.89
 - 2016-2017: \$1,605,379.41
 - 2015-2016: \$256,808.53
- **Total deliverable expenditures as a percentage of total agency expenditures:**
 - 2017-2018: 0.01%
 - 2016-2017: 0.04%
 - 2015-2016: 0.01%
- **Units Provided:**
 - 2017-2018: 70
 - 2016-2017: 46
 - 2015-2016: 44
- **Total employee equivalents required:**
 - 2017-2018: 2.75
 - 2016-2017: 2.90
 - 2015-2016: 2.55
- **Total collected from charging customers and non-state sources:**
 - 2017-18: \$0
 - 2016-17: \$0
 - 2015-16: \$0

Deliverable #115: Issue Building Permits for all newly constructed buildings and renovation projects

- **Single Unit Description:** Permit issuance for new construction or renovation project
- **Total Deliverable Expenditures (operational and employee salary/fringe):**
 - 2017-2018: \$65,093.42
 - 2016-2017: \$332,147.46
 - 2015-2016: \$60,425.54
- **Total deliverable expenditures as a percentage of total agency expenditures:**
 - 2017-2018: 0.00%
 - 2016-2017: 0.01%
 - 2015-2016: 0.00%
- **Units Provided:**
 - 2017-2018: 70
 - 2016-2017: 46
 - 2015-2016: 44
- **Total employee equivalents required:**
 - 2017-2018: 2.75
 - 2016-2017: 0.60
 - 2015-2016: .0.60
- **Total collected from charging customers and non-state sources:**
 - 2017-18: \$680.00
 - 2016-17: \$760.00
 - 2015-16: \$880.00

Deliverable #116: Perform building inspections of South Carolina Schools

- **Single Unit Description:** Final/Above Ceiling inspection for new construction or renovation project
- **Total Deliverable Expenditures (operational and employee salary/fringe):**
 - 2017-2018: \$151,884.66
 - 2016-2017: \$775,010.75
 - 2015-2016: \$140,992.92
- **Total deliverable expenditures as a percentage of total agency expenditures:**
 - 2017-2018: 0.00%
 - 2016-2017: 0.02%
 - 2015-2016: 0.00%
- **Units Provided:**
 - 2017-2018: 60
 - 2016-2017: 55
 - 2015-2016: 44
- **Total employee equivalents required:**
 - 2017-2018: 0.75
 - 2016-2017: 1.40
 - 2015-2016: .1.40
- **Total collected from charging customers and non-state sources:**
 - 2017-18: \$0
 - 2016-17: \$0
 - 2015-16: \$0

Deliverable #117: Issue Certificates of Occupancy

- **Single Unit Description:** Certificate indicating a building/structure/premise appear to meet S.C. codes, standards and the OSF guide for new construction or renovation project
- **Total Deliverable Expenditures (operational and employee salary/fringe):**
 - 2017-2018: \$151,884.66
 - 2016-2017: \$1,162,516.12
 - 2015-2016: \$146,028,38
- **Total deliverable expenditures as a percentage of total agency expenditures:**
 - 2017-2018: 0.00%
 - 2016-2017: 0.03%
 - 2015-2016: 0.00%
- **Units Provided:**
 - 2017-2018: 60
 - 2016-2017: 55
 - 2015-2016: 44
- **Total employee equivalents required:**
 - 2017-2018: 1.75
 - 2016-2017: 2.10
 - 2015-2016: .1.45
- **Total collected from charging customers and non-state sources:**
 - 2017-18: \$0
 - 2016-17: \$0
 - 2015-16: \$0

FY18-19

	Plan Reviews Conducted	Issued Building Permits	Building Inspections	Issued Certificate of Occupancy
FY18-19	149	149	152	152

FY18-19 Staffing:

- 5 Engineers/Associate Engineers
- 1 Vacant Admin Position, but administrative support shared from another office
- 1 Vacant Program Coordinator

Current Workload (11.25.19)

Plan Reviews	Building Inspections
167	162

FY 19-20 Projected staffing levels:

5 Engineers/Associate Engineers (*current*)

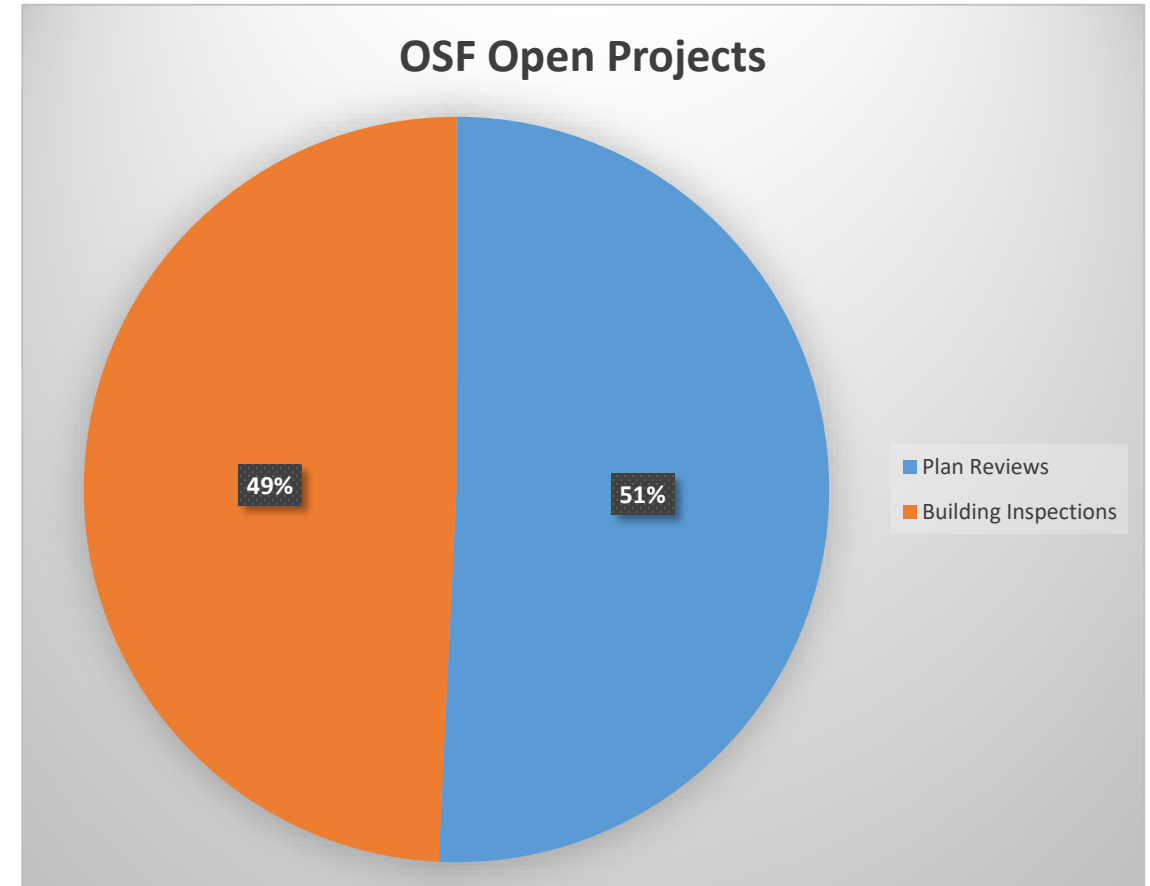
2 Engineers/Associate Engineers

(*interviews completed/paperwork processing for January 2020 hires*)

1 Program Coordinator (*current*)

1 Administrative Assistant (*current*)

9 Total (*anticipated by end of January 2020*)



Note: FY 20-21 Budget Request includes request for 2 additional FTEs

Work Load Trends

- Safety Infrastructure Funds (\$15M)
- Abbeville Capital Funds (\$55.8M)
- Consolidation Capital Funds (\$50M)
- Capital Improvement Funds (\$150M)

(FY 2020-21 Budget Request)

- Bond Referendums
 - Richland 2 (\$468M)
 - Lexington 1 (\$365M)
 - Beaufort (\$344M)



Additional Strategies During FY 2020 and FY 2021

- Eliminate backlog of projects by hiring plan reviewers off State Contract and via SCDE Fixed Price Contract
- Dedicated staff assigned to charter schools and provide intensive technical assistance regarding OSF review and approval processes
- Incorporate *2018 SC Building Codes* into *SC Planning and Construction Guides*
- Secure Funding for two additional FTEs per FY21 Budget Request
- Submit/implement revenue generating proposals (i.e., reinspection fees, bonding assessment, etc.)

Office of Transportation

MISSION

The mission of the Office of Transportation is to provide all South Carolina school districts and transportation eligible students with the safest, most reliable school bus fleet possible in support of the SCDE's mission that all public education students graduate prepared for success.

VISION

The SCDE Office of Transportation will provide the safest, most reliable school bus fleet possible to all school districts within the state of South Carolina. This will be accomplished through a continuous and aggressive pursuit of updating, upgrading, and replacing the current transportation fleet, proactive preventative school bus maintenance efforts, responsible and effective budgetary awareness, and strict adherence to State and Federal laws, mandates, and directives involving student transportation.

Employee Turnover Rate

12.19.19 Meeting Packet Page 118

Number of Employees (FTE Only) in the unit

Start of Fiscal Year

2017-2018	421
2016-2017	425
2015-2016	429

End of Fiscal Year

2017-2018	411
2016-2017	421
2015-2016	425

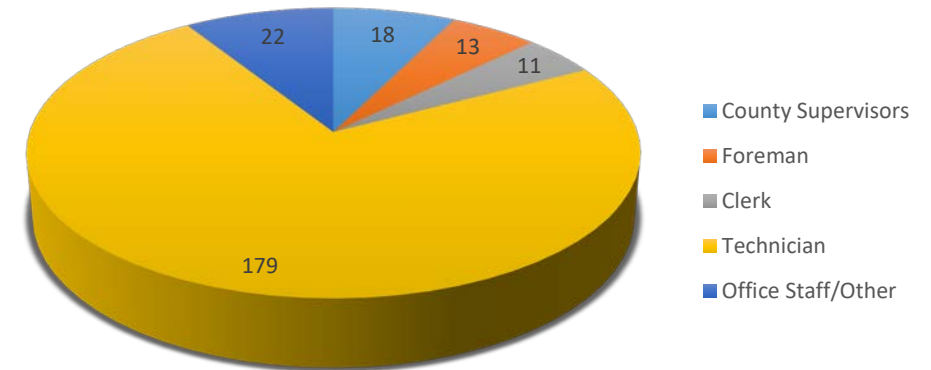
Leave the Unit During Fiscal Year

2017-2018	107
2016-2017	75
2015-2016	61

Turnover Rate

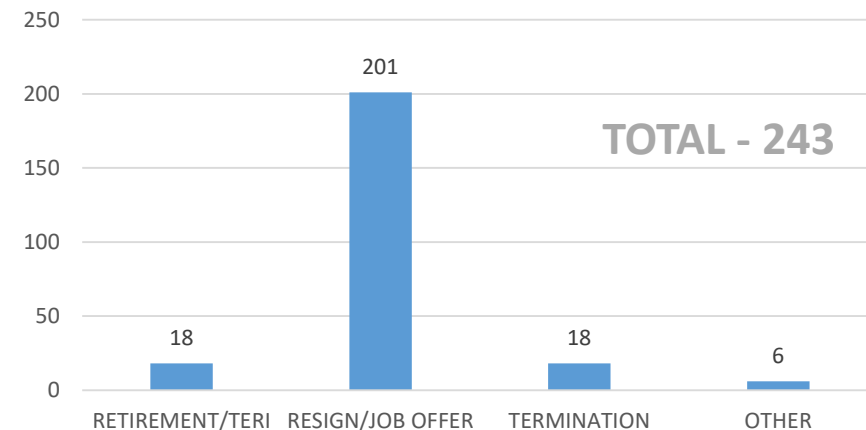
2017-2018	25.72%
2016-2017	17.73%
2015-2016	14.29%

TURNOVER 2015-2018



Total Turnover - 243

REASON FOR LEAVING 2015-2018



Deliverable #118: Maintain and Operate the Bus Fleet for School Districts Through County Bus Shops

- Single Unit Description: One bus shop
- Total Deliverable Expenditures (operational and employee salary/fringe):
 - 2017-2018: \$48,280,533.59
 - 2016-2017: \$42,199,012.33
 - 2015-2016: \$47,944,819.63
- Total deliverable expenditures as a percentage of total agency expenditures:
 - 2017-2018: 1.03%
 - 2016-2017: 0.93%
 - 2015-2016: 1.17%
- Units Provided:
 - 2017-2018: 42
 - 2016-2017: 42
 - 2015-2016: 42
- Total employee equivalents required:
 - 2017-2018: 400.00
 - 2016-2017: 400.00
 - 2015-2016: 400.00

Deliverable #119: Purchase School Buses for the Entire Public School System of South Carolina

- Single Unit Description: One Bus
- Total Deliverable Expenditures (operational and employee salary/fringe):
 - 2017-2018: \$63,950,834.00
 - 2016-2017: \$91,868,885.00
 - 2015-2016: \$18,336,260.00
- Total deliverable expenditures as a percentage of total agency expenditures:
 - 2017-2018: 1.59%
 - 2016-2017: 1.40%
 - 2015-2016: 0.03%
- Units Provided:
 - 2017-2018: 778
 - 2016-2017: 1,086
 - 2015-2016: 220
- Total employee equivalents required:
 - 2017-2018: 1.0
 - 2016-2017: 1.0
 - 2015-2016: 1.0

School Bus Purchases

SOURCE OF FUNDS	AMOUNT		
	15-16	16-17	17-18
Recurring Funds	\$1,015,506.00	\$3,015,506.00	\$5,015,506.00
EAA Funds	\$3,153,136.00	\$3,153,136.00	\$3,153,136.00
EEDA Funds	\$608,657.00	\$608,657.00	\$608,657.00
Capital Reserve	\$14,621,883.00	\$0.00	\$0.00
Lottery	\$11,061,704.24	\$12,100,000.00	\$25,719,255.00

FUTURE FUNDS FOR BUS PURCHASES	
VW SETTLEMENT	\$7.8 Million for purchase of 78 Propane Buses

EPA GRANT (DERA)		
FY	AMOUNT	BUSES
17-18	\$140,000.00	7
16-17	\$620,000.00	31
15-16	\$1,140,000.00	57

School Bus Fleet Data Summary

Basic Fleet Data (12/8/19)	Count	Avg. Year	Avg. Odometer
Route Buses (All)	5097	2013.6	98,546
Spare Buses (All)	573	1997	237,110
Total Buses (All)	5670	2011.7	112,486
Route to Spare % (All)	11.2%		
Regular Route Buses	4144	2012.6	90,070
Regular Spare Buses	432	1993.5	249,955
Regular Buses (Total)	4576	2010.8	110,543
Regular Buses Route to Spare %	9.4%		
S/N's Route Buses	954	2014.6	109,296
S/N's Spare Buses	140	2005.4	197,656
S/N's Buses (Total)	1094	2013.4	120,603
S/N's Buses Route to Spare %	12.8%		

BODY TYPE (11/26/19)	Count	Avg. Year	Avg. Odometer
Type A Regular	1	2017	20,237
Type A S/N's	2	2002	203,817
Total Type A (.053%)	3	2009.5	112,027
Type C Regular	4130	2011.1	110,786
Type C S/N's	836	2016.3	83,564
Total Type C (87.5%)	4966	2012	106,203
Type D Regular	433	2009.7	134,903
Type D S/N's	268	220,112	2007.8
Total Type D (12.3%)	701	165,627	2008.9

Air Conditioning DATA	Count	Avg. Year	Avg. Odometer
Route Buses W/AC (All)	3293	2017.4	49,529
Route Buses WO/AC (All)	1803	2004.8	187,938
Percentage Route Buses with AC (All)	64.6%		
Regular Route Buses with AC	2522	2017.8	38,939
Regular Route Buses WO/AC	1620	2004.5	185,011
Percentage Regular Route Buses with AC	60.9%		
S/N's Route Buses with AC	768	2016.2	84,076
S/N's Route Buses W/O AC	186	2007.7	213,431
Percentage S/N's Route Buses with AC	80.5%		

Year Model Cost Comparison (Avg)	Count
(*) 2012-2019 Year Models	(*) Under Warranty
Average Annual Parts Cost	\$1105
Average Annual Fuel Cost	\$4136
Total	\$5241
1988/90 Year Models	
Average Annual Parts Cost	\$3164
Average Annual Fuel Cost	\$6206
Total	\$9370

FUEL TYPE (11/26/19)	Count	Avg. Year	Avg. Odometer
Gasoline (.018%)	1	2017	20,237
Diesel (97.5%)	5529	2011.5	115,614
Liquefied Petroleum Gas (LPG) (2.4%)	139	2018.8	33,506
Compressed Natural Gas (CNG) (.018%)	1	2018	32,078

School Bus Fleet Data Summary

AVERAGE AGE OF SCHOOL BUS FLEET	
ROUTE	2013.6 (6 Years)
SPARE	1997 (22 Years)
ALL	2012 (7 Years)
# OVER 15 YEARS*	972 (17.1%)
AVERAGE MILES PER BUS	14,500

* COST TO REPLACE ALL OVER 15 YEARS	\$84,357,936.00
-------------------------------------	-----------------

Age Range (Route)	0-5 years	6-10 Years	11-15 Years	16-20 Years	> 20 Years
Total	3331	543	721	328	174
Percentage	65.4%	10.7%	14.1%	6.4%	3.4%

- **PRELIMINARY GOALS**

- Replace all non AC S/N's buses = (273) \$ 24,654,903
- Replace all 1988/90 model buses = (447) \$ 45,181,866
- Replace all 1991-1999 regular buses = (Ala/29 units) \$ 2,613,654
- Total for above: **\$72,540,734**

Deliverable #120: Purchase and Provide Fuel for School Buses to County Bus Shops

- Single Unit Description: A Gallon of Fuel
- Total Deliverable Expenditures (operational and employee salary/fringe):
 - 2017-2018: \$25,873,614.04
 - 2016-2017: \$14,331,296.00
 - 2015-2016: \$17,911,774.00
- Total deliverable expenditures as a percentage of total agency expenditures:
 - 2017-2018: 0.55%
 - 2016-2017: 0.32%
 - 2015-2016: 0.44%
- Units Provided:
 - 2017-2018: 10,571,277
 - 2016-2017: 8,945,810
 - 2015-2016: 10,141,340
- Total employee equivalents required:
 - 2017-2018: 2.0
 - 2016-2017: 2.0
 - 2015-2016: 2.0
- Total collected from charging customers and non-state sources:
 - 2017-2018: \$380,002.82
 - 2016-2017: \$492,929.88
 - 2015-2016: \$352,898.00

Deliverable #121: Provide Training to School Bus Drivers and Support School Districts

- **Single Unit Description:** A Training or Class Offered for Bus Drivers
- **Total Deliverable Expenditures (operational and employee salary/fringe):**
 - 2017-2018: \$414,193.00
 - 2016-2017: \$434,902.00
 - 2015-2016: \$447,949.00
- **Total deliverable expenditures as a percentage of total agency expenditures:**
 - 2017-2018: 0.01%
 - 2016-2017: 0.01%
 - 2015-2016: 0.01%
- **Units Provided:**
 - 2017-2018: 392
 - 2016-2017: 392
 - 2015-2016: 441
- **Total employee equivalents required:**
 - 2017-2018: 7.0
 - 2016-2017: 7.0
 - 2015-2016: 7.0

Deliverable #122: Trades Managers – Provide Support to the Technical Aspects of Bus Shops

- **Single Unit Description:** A Bus Shop Where an Engineering Associate Provides Support
- **Total Deliverable Expenditures (operational and employee salary/fringe):**
 - 2017-2018: \$505,779.00
 - 2016-2017: \$498,880.00
 - 2015-2016: \$515,632.00
- **Total deliverable expenditures as a percentage of total agency expenditures:**
 - 2017-2018: 0.01%
 - 2016-2017: 0.01%
 - 2015-2016: 0.01%
- **Units Provided:**
 - 2017-2018: 42
 - 2016-2017: 42
 - 2015-2016: 42
- **Total employee equivalents required:**
 - 2017-2018: 6.0
 - 2016-2017: 6.0
 - 2015-2016: 6.0

Deliverable #123: Area Supervisors – Responsible for Supervising County Supervisors in Assigned Area Bus Shops

- **Single Unit Description:** An Area Supervisor who is Responsible for a Designated Region of the State
- **Total Deliverable Expenditures (operational and employee salary/fringe):**
 - 2017-2018: \$292,924.00
 - 2016-2017: \$285,600.00
 - 2015-2016: \$0.00
- **Total deliverable expenditures as a percentage of total agency expenditures:**
 - 2017-2018: 0.01%
 - 2016-2017: 0.01%
 - 2015-2016: 0.00%
- **Units Provided:**
 - 2017-2018: 3
 - 2016-2017: 3
 - 2015-2016: 0
- **Total employee equivalents required:**
 - 2017-2018: 3.0
 - 2016-2017: 3.0
 - 2015-2016: 0.0

Area Supervisors

AREA I

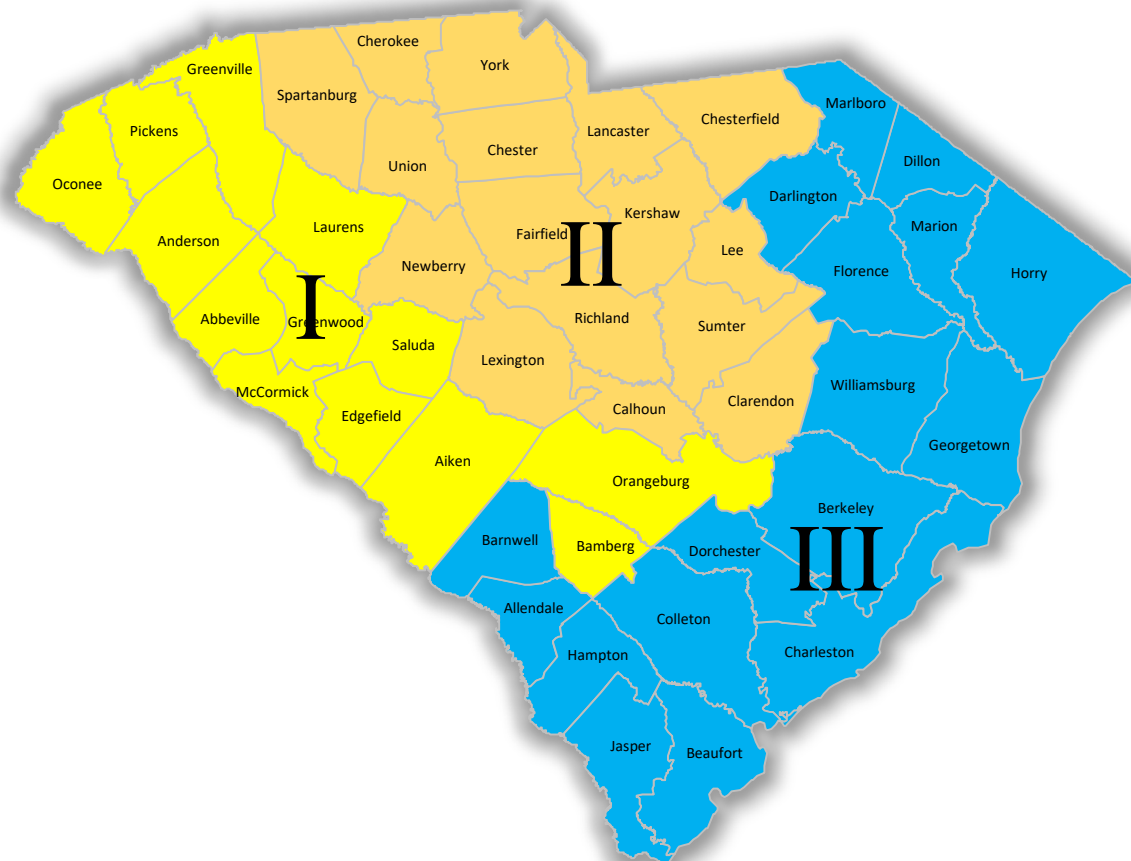
Total Shops:	11
Total Employees:	111
Total Buses:	1500
Total Districts:	24

AREA II

Total Shops:	16
Total Employees:	164
Total Buses:	2109
Total Districts:	33

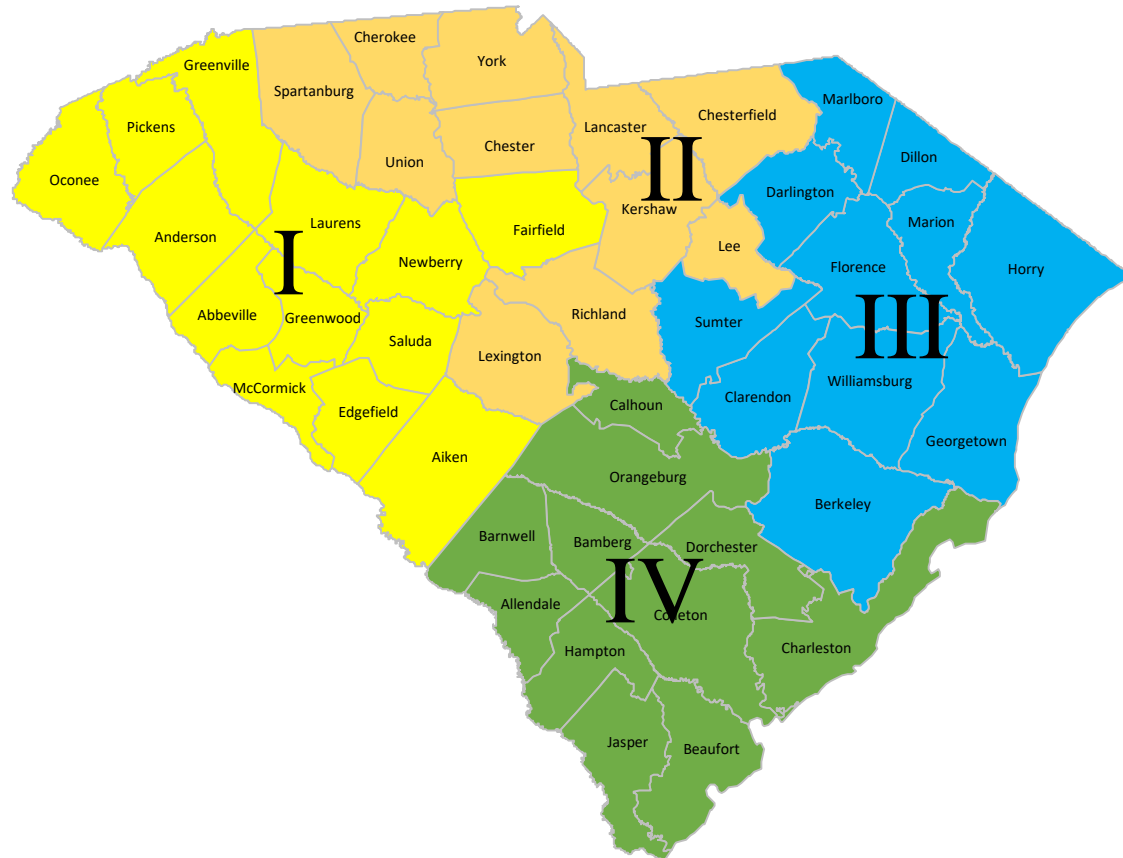
AREA III

Total Shops:	15
Total Employees:	161
Total Buses:	2061
Total Districts:	35



2016-2018

Area Supervisors



2018 - PRESENT

AREA I

Total Shops:	12
Total Employees:	119
Total Buses:	1553
Total Districts:	24

AREA II

Total Shops:	12
Total Employees:	127
Total Buses:	1634
Total Districts:	25

AREA III

Total Shops:	10
Total Employees:	101
Total Buses:	1284
Total Districts:	23

AREA IV

Total Shops:	8
Total Employees:	90
Total Buses:	1199
Total Districts:	21

COMMITTEE CONTACT INFORMATION AND UPCOMING MEETINGS

Legislative Oversight Committee



South Carolina House of Representatives

Committee Mission

Determine if agency laws and programs are being implemented and carried out in accordance with the intent of the General Assembly and whether they should be continued, curtailed or eliminated. Inform the public about state agencies.

Website: <https://www.scstatehouse.gov/CommitteeInfo/HouseLegislativeOversightCommittee.php>

Phone Number: 803-212-6810

Email Address: HCommLegOv@schouse.gov

Location: Blatt Building, Room 228

UPCOMING MEETINGS

Education and Cultural Subcommittee

*Note there is an ongoing
opportunity to submit
public input on the
committee's website.*